

PHARO

CATTLE COMPANY

2023
AI Sire Directory



800-311-0995

A.I. — Help or Hindrance

Many progressive cow/calf producers have been using artificial insemination (AI) in an attempt to improve the profitability and the genetic base of their cowherd. Unfortunately, A.I. has taken most commercial ranchers in the wrong direction. The more they AI, the less profitable and less efficient their cowherd becomes. Does this mean that AI has no value and won't work?

Absolutely not, but A.I. will never be any better than the bulls you are using. There are bulls that will help you meet your breeding objectives and there are bulls that will actually hinder your breeding program. It's up to you to select the right bulls. A word of caution, though. Don't be misled by pretty pictures and big numbers.

Although most of the bulls available through the major AI companies take pretty side-view pictures and have impressive EPDs, they don't have what the commercial rancher needs. For the most part, they are tall, slab-sided bulls with too much birth weight, too much growth, too much milk, and not near enough guts, muscle and fleshing ability. They were produced by high-maintenance, pampered cows in a high-input, artificial environment. A bull with a frame score under 6 is a rarity. So, unless you want to produce high-maintenance, hard-keeping cows that weigh 1400 to 1800 pounds, these bulls simply won't work.

We suggest you use bulls whose mothers, sisters and daughters are proving themselves in real-world ranching environments. The bulls you use should be coming from cowherds that are treated as tough as or tougher than your own. How else are they going to be able to move your cowherd in the right direction?

An AI program can be a very cost effective tool to improve the profitability and the genetic base of your cowherd. It will allow you to sample some of the best genetics available without actually owning the bulls. However, if you don't select and use the right bulls, it will be a total waste of time and money.

~ Kit Pharo

PHARO CATTLE COMPANY

March 2023



CHEYENNE WELLS, COLORADO PHONE 1-800-311-0995

Helping you is our business — and we take it very seriously.

Your Source for Grass-Based Genetics

If you are serious about reducing frame and cow size, and if you are serious about increasing thickness and fleshing ability, and if you are serious about calving ease and cow efficiency, then you have come to the right place. Our goal is to provide the genetics that will help you minimize expenses and maximize profits. We may be your only source for this type of genetics.

Moderate Size...

Contrary to popular opinion, it's impossible to produce an efficient, easy-fleshing, 1200-pound cow with bulls that are over a 4 frame score. Although we've seen some 6-frame cows that only weigh 1200 pounds, it's not a pretty sight. They are tall, thin, gutless cows that are very frail looking.

Many people mistakenly believe any cow under a 5 frame is a miniature. They're wrong! Just for the fun of it we challenge you to take a tape measure and see how tall 48 or 50 inches really is. You will discover that 3 and 4 frame cows are not really as small as you thought they were. When you add some thickness and fleshing ability to a smaller framed cow you have a package that is without equal. Our mature 3 and 4 frame cows weigh 1100 to 1250 pounds. That is big enough!

| Frame Score | Mature Cow Hip Height | Mature Bull Hip Height |
|-------------|-----------------------|------------------------|
| 2 | 46 | 50 |
| 3 | 48 | 52 |
| 4 | 50 | 54 |
| 5 | 52 | 56 |
| 6 | 54 | 58 |

Calving Ease and Fertility...

If you are concerned about profitability, then calving ease and fertility are the two most important traits you should be selecting for. It doesn't matter how much growth potential a calf has if it is born dead. Dead calves have distressingly low weaning weights. Likewise, open cows produce zilch in the way of weaning weights. True fertility is more a function of low maintenance requirements and fleshing ability than anything else. Maintenance requirements *must* be met *before* any weight gain or reproduction can take place.

Grass-Based Genetics...

Over the years, we have put together the biggest and best selection of low-maintenance, grass-based genetics in the world. You can choose from Angus, Red Angus and Polled Hereford. We also have two black Lowline bulls, along with some Tarentaise and Tarentaise Composite bulls. The latest addition to our lineup is a set of Mashona and Heat-Tolerant Composite bulls, including one South Poll bull. We have **78** bulls to choose from — with bulls to fit every budget. Quantity Discounts are available, except on bulls with a limited inventory.

Quantity Discounts — 10% Discount on 250 units or more
20% Discount on 500 units or more

Free Shipping (continental US) on orders of 100 straws or more (savings of \$140). Semen can be shipped right to your door. To place an order, call us toll free at **800-311-0995** or send an email to **Bulls@PharoCattle.com**.

~ SIRE INDEX ~

Angus Sires Page

| | |
|---------------------------|----|
| Alamo | 21 |
| Back 2 Basics | 10 |
| Bo Jangles | 14 |
| Bullseye | 5 |
| Cha Ching | 6 |
| Cinch | 12 |
| Colorado Rebel | 9 |
| Commissioner | 17 |
| Conquistador | 7 |
| Daily Double | 15 |
| Double Your Profit | 8 |
| Down Town | 4 |
| East Bound and Down | 5 |
| EZ Come EZ Go | 6 |
| Fat Chance | 14 |
| Fortune | 12 |
| Gambino | 25 |
| GameChanger | 25 |
| Hayden | 3 |
| Hickory | 17 |
| High Country | 20 |
| High Point | 10 |
| High Roller | 9 |
| Hobnob | 16 |
| Jake | 11 |
| Jester | 21 |
| José Cuervo | 16 |
| Little Big Man | 3 |
| Little Mo | 23 |
| Mojo | 13 |
| Ranger | 24 |
| Razors Edge | 20 |
| Real McCoy | 19 |
| Rebel | 8 |
| Riptide | 22 |
| Ruger | 18 |
| Yellowstone | 24 |

Lowline Sires Page

| | |
|---------------|----|
| Bruce | 26 |
| Machine | 26 |

Red Angus Sires Page

| | |
|------------------------|----|
| Braveheart | 32 |
| Bullwinkle | 33 |
| Cliff | 31 |
| Crandall | 39 |
| Durango | 36 |
| Festus | 34 |
| Five Star Gold | 38 |
| Forte | 37 |
| Gold Mine | 34 |
| Gold Standard | 39 |
| Hercules | 35 |
| Herd Quitter | 27 |
| Hiawatha | 33 |
| Jango | 31 |
| Jazz Boy | 30 |
| Johnny B Special | 28 |
| Johnny Mizzou | 29 |
| Parker | 38 |
| Security | 35 |
| Yazzou | 30 |

Polled Hereford Sires Page

| | |
|---------------|----|
| 123 | 42 |
| Axel | 43 |
| Calvert | 36 |
| Clemson | 36 |
| Domino | 40 |

Tarentaise Sires Page

| | |
|-------------------|----|
| Black Bonus | 45 |
| Colfax | 44 |
| Energizer | 45 |

Tarentaise Composite Sires Page

| | |
|-------------------|----|
| Colombo | 46 |
| Elijah | 47 |
| Tallahassee | 46 |

Heat-Tolerant Sires Page

| | |
|---------------------|----|
| Callado | 51 |
| Diamond | 50 |
| Generalissimo | 52 |
| Go Get 'Em | 52 |
| He-Man | 51 |
| Hondo | 49 |
| Tarzan | 49 |
| Zim Bob | 48 |

**Cowboy Logic: "If you aim at
nothing, you'll hit it every time."**

BLACK ANGUS

Hayden

Birth Date: 4/17/10

Reg. # : 16761830

EPDs: **B.Wt.** -1.6

W.Wt. +2

Y.Wt. +11

Milk +14

Frame: 4.0 (est)

Mature Wt.: N/A

Price: \$10/straw; \$35/certificate

Our Genetic Predictions

Calving Ease: *****

Udder: *****

Fleshing Ability: *****

Disposition: *****



Sire of Hayden

MH Tank 54

Lodge of Wye

MH Mina 836

PCC FSR Hayden 2071X

OCC Hunter 928H

MH Clova Pride 637S

MH Clova Pride 3154

Career of Wye

Lorena of Wye

OCC Broadside 876B

MO Miss Awesome 3100

OCC Focus 813F

OCC Dixie Erica 960E

MH Rainmaker 127

Black Tooth Clova 215Y

Hayden is somewhat of an outcross to our program. He is a grandson of Lodge of Wye, who was born in 1963 (60 years ago). He seems to be the complete package. Hayden has proven to be an udder improver in the PCC program. He is a 5-star calving ease bull with a birth weight EPD in the top 10% of the Angus breed. He is an extremely low-maintenance bull with an energy EPD in the top 1% of the breed. Co-owned with Seven Spades Cattle Company in Colorado and Flying S Ranch in Kansas.



Little Big Man

Birth Date: 5/25/14

Reg. # : 18085038

EPDs: **B.Wt.** -3.6

W.Wt. +6

Y.Wt. +17

Milk +21

Frame: 2.0 (est)

Mature Wt.: N/A

Price: \$16/straw; \$35/certificate

Our Genetic Predictions

Calving Ease: *****

Udder: *****

Fleshing Ability: *****

Disposition: *****

MH Tank 54

PCC FSR Hayden 2071X

MH Clova Pride 637S

PCC SSCC Little Big Man 1740B

PCC SSCC Mojo 1704X

SSCC Lacy 2734Z

SSCC Lacy 4716

Lodge of Wye

MH Mina 836

OCC Hunter 928H

MH Clova Pride 3154

Dunlouse Jipsey Earl E161

SSCC Miss Basin 4705

OCC Keno 681K

SSCC Lacy J 07B9

Little Big Man is a Hayden son who lives up to his name. He is a powerhouse bull in a small package. Little Big Man was used naturally at PCC Headquarters for several years. He has extreme calving ease with a birth weight EPD in the top 1% of the Angus breed. Little Big Man's calving ease direct EPD is also in the top 3% of the Angus breed. He is an extremely low-maintenance bull with an energy value (\$EN) in the top 1% of the Angus breed. Little Big Man is co-owned with Seven Spades Cattle Company in Colorado.

BLACK ANGUS



Down Town

Birth Date: 5/13/14

Reg. # : 18085047

EPDs: **B.Wt.** -1.9 **W.Wt.** +23 **Y.Wt.** +46 **Milk** +13

Frame: 3.0 **Mature Wt.:** 1900 **Price:** \$16/straw; \$35/certificate

Our Genetic Predictions

Calving Ease: *****

Udder: *****

Fleshing Ability: ****

Disposition: *****



Semen is available for export for \$22 (US) per straw.

MH Tank 54
PCC FSR Hayden 2071X
MH Clova Pride 637S

PCC SSCC Down Town 1719B

PCC OH Pledge 2357P
SSCC Idaho Lady 0740X
SSCC Idaho Lady 8733U

Lodge of Wye
MH Mina 836
OCC Hunter 928H
MH Clova Pride 3154

OCC Homer 650H
CM Merle 863L
Mon Reposa Rito (Idaho)
SSCC Blackcap Lady 200

Down Town was the leadoff bull in our 2015 Fall Bull Sale. He is a Hayden son out of a Pledge daughter. Down Town produces thick, deep-bodied, early-maturing sons and daughters. He is a 5-star calving ease bull with a birth weight EPD in the top 5% of the Angus Breed. He is an extremely low-maintenance bull with an energy EPD in the top 1% of the Angus breed. Down Town is co-owned with Seven Spades Cattle Company in Colorado, Bruns Angus in Nebraska and D Bar J Cattle in Missouri.

BLACK ANGUS



East Bound & Down

Birth Date: 8/29/17

Reg. # : 19158643

EPDs: B.Wt. -1.6

W.Wt. +11

Y.Wt. +26

Milk +14

Frame: 3.5 (est)

Mature Wt.: N/A

Price: \$16/straw; \$35/certificate

Our Genetic Predictions

Calving Ease: *****

Udder: *****

Fleshing Ability: ****

Disposition: *****

PCC FSR Hayden 2071X
PCC SSCC Down Town 1719B
SSCC Idaho Lady 0740X

PCC D-J East Bound & Down 2752E

PCC Pay Day 1065A
D-J Miss Payday 555C
D-J Miss Emblazon 223Z

MH Tank 54
MH Clova Pride 637S
PCC OH Pledge 2357P
SSCC Idaho Lady 8733U
Woodstone J Eric 8715
PCC Dixie Erica Y1040
PCC Scat 1000W
CAR Miss Emblazon 308

East Bound & Down is our favorite Down Town son. With Hayden, Pledge and Idaho on top and with Pay Day, Scat and Emblazon on the bottom, this bull's pedigree is stacked for maternal greatness. His phenotype matches his genotype. He is a heavy-muscled bull that stays pig-fat year-round! East Bound's birth weight EPD is in the top 10% of the Angus breed. His \$EN EPD is in the top 1% of the breed. East Bound is co-owned with D Bar J Cattle in Missouri.



Bullseye

Birth Date: 5/21/14

Reg. # : 18058333

EPDs: B.Wt. -2.1

W.Wt. +33

Y.Wt. +55

Milk +20

Frame: 3.5 (est) **Mature Wt.:** N/A

Price: \$16/straw; \$35/certificate

Our Genetic Predictions

Calving Ease: *****

Udder: *****

Fleshing Ability: *****

Disposition: *****



Sire of Bullseye

PCC Bullseye 1057B

Alap of Wye UMF 8329
Beral of Wye UMF 9288
Blackbird of Wye UMF 7620

PCC OH Pledge 2357P
PCC Dixie Erica Y1043
PCC Dixie Erica

Manning of Wye
Alexina of Wye UMF 6968
Angwin of Wye UMF 7097
Blackbird of Wye UMF 6982
OCC Homer 650H
CM Merle 863L
Emulation N Bar 5522
PCC Dixie Erica S6046

Bullseye is right on target in the PCC program. He is a 20-star Beral of Wye son! Bullseye is an extremely masculine, heavy-muscled Beral son out of a favorite Pledge daughter. He stays in great shape year-round while working in a PCC cooperative herd in Nebraska. Bullseye's birth weight EPD is in the top 4% of the Angus breed. His maintenance energy (\$EN) EPD is in the top 3% of the breed. He is co-owned with Landrigan Livestock and Darrill Crouch, both in Nebraska.

BLACK ANGUS



EZ Come EZ Go

Birth Date: 5/15/15

Reg. # : 18421535

EPDs: **B.Wt.** -1.5

W.Wt. +31

Y.Wt. +47

Milk +24

Size: 3.5 (est.)

Mature Wt.: N/A

Price: \$18/straw; \$35/certificate

Our Genetic Predictions

Calving Ease: *****

Udder: *****

Fleshing Ability: ****

Disposition: *****



Semen is available for export for \$24 (US) per straw.

PCC EZ Come EZ Go 1060C

PCC Low Input 1052W
PCC D-J Easy Money 2739Z
D-J Miss Merle 033X

Beral of Wye UMF 9288
PCC Miss Pine Bank Z2053
PCC Miss Pine Bank W9051

Beral of Wye UMF 9288
PCC Eman Sheman 227
OCC Moderator 825M
CM Merle 918E

Alap of Wye UMF 8329
Blackbird of Wye UMF 7620
PCC TQ Patton N6T
PCC Miss Pine Bank T7050

EZ Come EZ Go was the leadoff bull in the 2016 Fall Sale in Nebraska. We have seen some very impressive EZ calves here at PCC Headquarters, in Texas and in Australia. He is double-bred to Beral of Wye. He is an extremely masculine, heavy-muscled bull with 5-star calving ease. His \$EN EPD is in the top 5% of the breed. EZ Come EZ Go is co-owned with Furracabad Station in Australia.

Cha Ching

Birth Date: 9/5/15

Reg. # : 18493345

EPDs: **B.Wt.** -3.0

W.Wt. +28

Y.Wt. +47

Milk +26

Frame: 4.0 (est)

Mature Wt.: N/A

Price: \$12/straw; \$35/certificate

Our Genetic Predictions

Calving Ease: *****

Udder: ****

Fleshing Ability: *****

Disposition: *****

PCC D-J Cha Ching 2770C

PCC Low Input 1052W
PCC D-J Easy Money 2739Z
D-J Miss Merle 033X

PCC OH Overhaul 2335R
D-J Merle O 117Y
OH Merle S6151

Beral of Wye UMF 9288
PCC Eman Sheman 227
OCC Moderator 825M
CM Merle 918E

OH West Plains 3510
OH Georgina 3563
MVL 854E Emblazon 8P
CM Merle 734H

Cha Ching was the leadoff Angus bull in the 2017 Missouri Sale. He is another thick, heavy-muscled Easy Money son. He has a 5++ rating for fleshing ability. Cha Ching has an excellent Igenity score for tenderness. His birth weight EPD is in the top 2% of the Angus breed. Cha Ching's maintenance energy (\$EN) is in the top 10%. He is co-owned with Bruns Angus in Nebraska and D Bar J Cattle in Missouri.

BLACK ANGUS



Conquistador

Birth Date: 3/10/15

Reg. # : 18258675

EPDs: **B.Wt.** -5.0 **W.Wt.** +12 **Y.Wt.** +24 **Milk** +21

Frame: 3.0 **Mature Wt.:** N/A **Price:** \$26/straw; \$35/certificate

Our Genetic Predictions

Calving Ease: *****

Udder: *****

Fleshing Ability: *****

Disposition: *****



Semen is available in Canada and Australia for \$32 (US) per straw.

| | |
|-----------------------------------|-----------------------------|
| Beral of Wye UMF 9288 | Alap of Wye UMF 8329 |
| PCC Low Input 1052W | Blackbird of Wye Umf 7620 |
| PCC Eman Sheman 227 | OCC Emancipate 889E |
| PCC D-J Conquistador 2707C | Tiedale Lass 92-741 |
| PCC Scat 1000W | PCC Bench Mark L81 |
| D-J Birch Cat 252Z | Tiedale Lass 2-18-044 |
| KT Irvington 2895 384 1959 | CT Irvington Field Marshall |
| | Graham Eurotia 74 |

Conquistador goes back to Beral of Wye on the top side of his pedigree and Bench Mark on the bottom. That's a well-proven combination! Conquistador's birth weight EPD is in the top 1/2 of 1% of the Angus breed. His maintenance energy (\$EN) is in the top 2%. Our first-ever (2019) Australian Bull Sale featured a very impressive set of Conquistador sons. His daughters are outstanding in every way! Co-owned with D Bar J Cattle in Missouri and Furracabad Station in Australia. **Limited semen inventory.**

BLACK ANGUS



Double Your Profit

Birth Date: 9/18/16

Reg. # : 18814205

EPDs: B.Wt. -4.8

W.Wt. +11

Y.Wt. +18

Milk +21

Frame: 4.0 (est)

Mature Wt.: N/A

Price: \$12/straw; \$35/certificate

Our Genetic Predictions

Calving Ease: *****

Udder: *****

Fleshing Ability: *****

Disposition: ****

Beral of Wye UMF 9288
PCC Low Input 1052W
PCC Eman Sheman 227
PCC D-J Double Your Profit 2745D
PCC Augustus 1010T
D-J Ida Blackcap 108Y
Blackcap 233 of SW40

Alap of Wye UMF 8329
Blackbird of Wye UMF 7620
OCC Emancipate 889E
Tiedale Lass 92-741
Mon Reposa Rito (Idaho)
CM Blackbird 724M
Forgeman of Wye UMF 8727
Blackcap Johnnie 233 of SW40

Double Your Profit is another Low Input son. He goes back to Idaho on the bottom side of his pedigree. He is a very thick, heavy-muscled, masculine bull. Double Your Profit has an outstanding Igenity score for tenderness. His birth weight EPD is in the top 1% of the Angus breed. Double Your Profit's maintenance energy (\$EN) EPD is also in the top 1% of the breed. He is co-owned with D Bar J Cattle in Missouri.



Rebel

Birth Date: 4/21/05

Reg. # : 15192082

EPDs: B.Wt. -2.3

W.Wt. +21

Y.Wt. +41

Milk +23

Frame: 3.0

Mature Wt.: N/A

Price: \$14/straw; \$35/certificate

Our Genetic Predictions

Calving Ease: *****

Udder: *****

Fleshing Ability: *****

Disposition: *****

OCC Focus 813F
OCC Homer 650H
OCC Dixie Erica 816B
PCC MH Rebel 2009R
OCC Emblazon 854E
MH Beauty 148
MH Beauty 907

Basin Rainmaker 654X
Dixie Erica of C H 1019
DHD Traveler 6807
Dixie Erica of C H 1019
DHD Traveler 6807
Dixie Erica of C H 1019
Papa Durabull 9805
VDAR Beauty 50

Rebel has proven to be the total package. His daughters are consistently flawless. His sons are consistently high sellers in PCC bull sales. Rebel's birth weight and calving ease direct EPDs are both in the top 3% of the Angus breed. His energy EPD is also in the top 3% of the breed. Rebel is co-owned with Flying S Ranch in Kansas and Monte Howrey in South Dakota. **Very limited semen inventory.**

BLACK ANGUS



Colorado Rebel

Birth Date: 5/8/13

Reg. # : 17741052

EPDs: **B.Wt.** -3.4 **W.Wt.** +17 **Y.Wt.** +41 **Milk** +29

Frame: 4.0 (est) **Mature Wt.:** N/A **Price:** \$12/straw; \$35/certificate

Our Genetic Predictions

Calving Ease: *****

Udder: *****

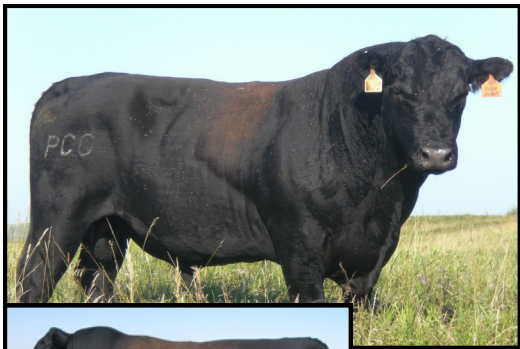
Fleshing Ability: *****

Disposition: *****

OCC Homer 650H
PCC MH Rebel 2009R
MH Beauty 148
PCC Colorado Rebel 1057A
Beral of Wye UMF 9288
PCC Dixie Erica Y1047
PCC Dixie Erica P411

OCC Focus 813F
OCC Dixie Erica 816B
OCC Emblazon 854E
MH Beauty 907
Alap of Wye UMF 8329
Blackbird of Wye UMF 7620
OCC Emancipate 889E
PCC Modest Dixie 209

Colorado Rebel is a very impressive Rebel son out of a Beral of Wye daughter that is out of our favorite P411 cow. He has an outstanding Igenity score for tenderness. He combines extreme thickness and fleshing ability with extreme calving ease. Colorado Rebel's birth weight EPD is in the top 1% of the Angus breed. His maintenance energy (\$EN) EPD is in the top 10% of the breed. Colorado Rebel is co-owned with Bruns Angus in Nebraska.



High Roller

Birth Date: 5/21/11

Reg. # : 17195299

EPDs: **B.Wt.** -0.8 **W.Wt.** +31 **Y.Wt.** +52 **Milk** +24

Frame: 4.5 (est) **Mature Wt.:** N/A **Price:** \$8/straw; \$35/certificate

Our Genetic Predictions

Calving Ease: *****

Udder: *****

Fleshing Ability: *****

Disposition: *****

Sire of High Roller

OCC Homer 650H
PCC OH Pledge 2357P
CM Merle 863L
PCC High Roller 1051Y
Bear of Wye UMF 6591
SCC MS Bear 2261
SCC MS Broadside 044

OCC Focus 813F
OCC Dixie Erica 816B
OCC Joker 620J
OCC CM Merle 918E
Lambdin of Wye UMF 6278
Blackbird of Wye UMF 6324
OCC Broadside 876B
SCC MS Emulation 628

High Roller is a Pledge son out of a favorite Bear of Wye daughter that produced 14 calves without missing. He will produce long-lasting, fertile cows with great udders. High Roller is a thick bull — with calving ease. His calving ease direct EPD is in the top 10% of the breed. He is an extremely low-maintenance bull with a \$EN EPD in the top 3% of the breed. High Roller also has outstanding DNA scores for marbling and tenderness. He is co-owned with Ohio Land and Cattle.

BLACK ANGUS



Pictured at ten years of age

High Point

Birth Date: 6/1/11

Reg. # : 17195302

EPDs: **B.Wt.** -2.8 **W.Wt.** +31 **Y.Wt.** +49 **Milk** +20

Frame: 4.0 **Mature Wt.:** N/A **Price:** \$16/straw; \$35/certificate

Our Genetic Predictions

| | |
|--------------------------------|--------------------------|
| Calving Ease: ***** | Udder: ***** |
| Fleshing Ability: ***** | Disposition: **** |

OCC Homer 650H
PCC OH Pledge 2357P
CM Merle 863L

PCC High Point 1054Y

Emulation N Bar 5522
PCC Dixie Erica U8031
PCC Dixie Erica P411

OCC Focus 813F
OCC Dixie Erica 816B
OCC Joker 620J
CM Merle 918E

Emulation 31
Ankony 8F78 Lass 8F275
OCC Emancipate 889E
PCC Modest Dixie 209

High Point is another great Pledge son that has left his mark on the PCC program. His dam was our very best Emulation 5522 daughter. She produced a calf every year for 12 years. High Point is still working at 12 years of age. His birth weight and calving ease direct EPDs are both in the top 2% of the Angus breed. His \$EN EPD is in the top 2% of the Angus breed. High point is a guaranteed udder improver. He is co-owned with Bruns Angus in Nebraska.



Back 2 Basics

Birth Date: 5/15/15

Reg. # : 18421533

EPDs: **B.Wt.** -1.7 **W.Wt.** +27 **Y.Wt.** +52 **Milk** +20

Frame: 3.5 **Mature Wt.:** N/A **Price:** \$10/straw; \$35/certificate

Our Genetic Predictions

| | |
|-------------------------------|---------------------------|
| Calving Ease: ***** | Udder: ***** |
| Fleshing Ability: **** | Disposition: ***** |

OCC Homer 650H
PCC OH Pledge 2357P
CM Merle 863L

PCC Back 2 Basics 1056C

Beral of Wye UMF 9288
PCC Dixie Erica A3053
PCC Dixie Erica W9055

OCC Focus 813F
OCC Dixie Erica 816B
OCC Joker 620J
OCC CM Merle 918E

Alap of Wye UMF 8329
Blackbird of Wye UMF 7620
PCC Bench Mark L81
BAA Dixie Erica 4103A

Back 2 Basics is a Pledge son that goes back to Beral of Wye and Bench Mark on the bottom side of his pedigree. He is a very thick, heavy-muscled bull. Back 2 Basic's birth weight EPD is in the top 5% of the Angus breed. His calving ease direct EPD is in the top 2% of the breed. He is an extremely low-maintenance bull with a \$EN EPD is in the top 1% of the Angus breed. Back 2 Basics is co-owned with Furracabad Station in Australia.

BLACK ANGUS



Jake

Birth Date: 3/11/11

Reg. # : 17085993

EPDs: B.Wt. -3.8

W.Wt. +28

Y.Wt. +52

Milk +22

Frame: 4.0 (est)

Mature Wt.: N/A

Price: \$14/straw; \$35/certificate

Our Genetic Predictions

Calving Ease: *****

Udder: *****

Fleshing Ability: *****

Disposition: ****

OCC Homer 650H
PCC OH Pledge 2357P
CM Merle 863L

PCC FSR Jake 1950Y

JAD Matrix M604
JAD Queen Mother S35
JAD Queen Mother 947

OCC Focus 813F
OCC Dixie Erica 816B
OCC Joker 620J
CM Merle 918E

OCC Emblazon 854E
JAD Annie 6604
Sitz Traveler 5556
JAD Queen Mother 5653

Jake has already made his mark in our program. Eight sons are working in PCC cowherds. Jake is an extreme calving ease bull. His calving ease direct and birth weight EPDs are both in the top 1% of the Angus breed. Jake's calving ease maternal (CEM) EPD is in the top 2% of the breed. His maintenance energy (\$EN) is also in the top 4% of the breed. Jake is co-owned with Flying S Ranch in Kansas.

BLACK ANGUS



Fortune

Birth Date: 4/1/16

Reg. # : 18543272

EPDs: B.Wt. -2.4

W.Wt. +21

Y.Wt. +34

Milk +32

Frame: 3.5

Mature Wt.: N/A

Price: \$12/straw; \$35/certificate

Our Genetic Predictions

Calving Ease: *****

Udder: *****

Fleshing Ability: *****

Disposition: *****



Semen is available in Australia for \$18 (US) per straw.

PCC OH Pledge 2357P
PCC FSR Jake 1950Y
JAD Queen Mother S35

PCC FSR Fortune 3599D

PCC FSR Wolverine 1943X
FSR Elkin 3157
FSR Elkin 948

OCC Homer 650H
CM Merle 863L
JAD Matrix M604
JAD Queen Mother 947

PCC MH Rebel 2009R
BR Missy 808 020 231
PCC MH Rebel 2009R
FSR Miss Five Star 770

Fortune is a very heavy-muscled Jake son with extreme calving ease and 5+ fleshing ability. He was in the top 5% of his contemporary group for grass efficiency and early maturity. Fortune's maintenance energy EPD is in the top 10% of the Angus breed. His birth weight and calving ease direct EPDs are both in the top 3%. Fortune also has an outstanding DNA score for tenderness. He is co-owned with Flying S Ranch in Kansas and Furracabad Station in Australia.



Cinch

Birth Date: 4/14/12

Reg. # : 17380927

EPDs: B.Wt. -2.6

W.Wt. +33

Y.Wt. +62

Milk +20

Frame: 4.0

Mature Wt.: N/A

Price: \$12/straw; \$35/certificate

Our Genetic Predictions

Calving Ease: *****

Udder: ****

Fleshing Ability: *****

Disposition: ****



PAR Dakota Homer 95
PCC TQ Science 1843W
TQ Barbara 80R

PCC BA Cinch 2318Z

OCC Sampson 876S
BA Sampson 935V
V-Bar Janet 561

OCC Homer 650H
PAR Traveling Broadside 563
Feltons V Filibuster 6
TQ Band Lassie 32M

OCC Emblazon 854E
OCC Juanada 710K
V Bar Traveler 717G
Jannet of RR 770B

Cinch worked very well on a high-elevation ranch in the Colorado mountains for seven years. He is a well-muscled bull with great fleshing ability. Cinch has an outstanding Igenity score for tenderness. His birth weight and calving ease direct EPDs are both in the top 3% of the Angus breed. Cinch's maintenance energy (\$EN) EPD is also in the top 3% of the Angus breed. He is co-owned with Pulliam Angus Ranch in Colorado and Bruns Angus in Nebraska.

BLACK ANGUS



Mojo

Birth Date: 4/18/10

Reg. # : 16777360

EPDs: **B.Wt.** -4.4 **W.Wt.** +11 **Y.Wt.** +9 **Milk** +37

Frame: 3.0 **Mature Wt.:** N/A **Price:** \$14/straw; \$35/certificate

Our Genetic Predictions

Calving Ease: *****

Udder: ****

Fleshing Ability: *****

Disposition: *****

PCC SSCC Mojo 1704X

Betro of Classlochie
Dunlouse Jipsey Earl E161
Dunlouse Jipsey Clova C095

Mon Reposa Rito (Idaho)
SSCC Miss Basin 4705
SSCC Miss Basin 191

Rockie of Woodview
Bethrothed 19 of Classiochie
Bernardo of Classlochie
Cannahars Jipsey Yoko Y485

Mon Reposa Shandar
Lawsons Rim Rock 606-4003
OCC Emancipate 889E
SSCC Miss Basin 1FT7

Mojo's sire, Jipsey Earl, is a 100% Scottish-bred bull that has worked well in our program. Mojo's dam is the easiest-fleshing Idaho daughter we have ever seen. Mojo combines extreme calving ease with tremendous thickness and eye appeal. His birth weight and calving ease direct EPDs are both in the top 1/2 of 1% of the Angus breed. His \$EN value is in the top 5% of the breed. Mojo is co-owned with Seven Spades Cattle Company in Colorado.

BLACK ANGUS



Bo Jangles

Birth Date: 2/23/18

Reg. # : 19296913

EPDs: B.Wt. -3.6

W.Wt. +20

Y.Wt. +28

Milk +36

Frame: 3.5

Mature Wt.: N/A

Price: \$18/straw; \$35/certificate

Our Genetic Predictions

Calving Ease: *****

Udder: *****

Fleshing Ability: *****

Disposition: *****

Dunlouse Jipsey Earl E161
PCC SSCC Mojo 1704X
SSCC Miss Basin 4705
PCC SSCC Bo Jangles 1702F
SAV Fame 9312
SSCC Tiedale Lass 4706B
SSCC Lass Backer 8716U

Betro of Classlochic
Dunlouse Jipsey Clova C095
Mon Reposa Rito (Idaho)
SSCC Miss Basin 191
SAV Fame
SAV Juana 6232
CM Morgan 687M
SSCC Lass 4754

Bo Jangles may be one of those once-in-a-lifetime bulls. He is a Mojo son that combines extreme thickness with extreme calving ease. His birth weight and calving ease direct EPDs are both in the top 1/2 of 1% for the Angus breed. He is an extremely early-maturing bull with 5+ grass efficiency. He ties with Cha Ching, Conquistador and Mojo for the highest DNA score for Heifer Pregnancy (fertility). Bo Jangles is co-owned with Seven Spades Cattle Company in Colorado and Furracabad Station in Australia.

Fat Chance

Birth Date: 3/29/18

Reg. # : 19300750

EPDs: B.Wt. +0.7

W.Wt. +34

Y.Wt. +64

Milk +32

Frame: 4.0 (est)

Mature Wt.: N/A

Price: \$10/straw; \$35/certificate

Our Genetic Predictions

Calving Ease: *****

Udder: *****

Fleshing Ability: *****

Disposition: *****

Sinclair Timeless 8BA4
PCC FSR Razz 1803B
Sinclair Eileen 2JP5 0Z2
PCC FSR Fat Chance 2013F
PCC FSR Bud 2071B
FSR Clova Pride D6342
FSR Clova Pride B454

Sinclair In Time 6BT39
Sinclair Blackbird 2P8 7079
Dunlouse Jipsey Earl E161
Sinclair Eileen 0Z2 6J5
PCC Iron Man 049
FSR Elkin 242
Sinclair Timeless 8BA4
Sinclair C Pride 2PU17 8FC21

Fat Chance is a relatively new addition to our lineup. Three-fourths of his pedigree is a total outcross to the PCC program. We expect him to bring in some hybrid vigor. He is an early-maturing bull — with 5-star grass efficiency. Fat Chance has a DNA score for calving ease of 9 out of 10. We are very confident in giving him 4-star calving ease. His DNA profile also indicates he will sire daughters with tremendous fertility. He is co-owned with Flying S Ranch in Kansas and Enrique Valles in Mexico.

BLACK ANGUS



Daily Double

Birth Date: 9/27/16

Reg. # : 18814203

EPDs: B.Wt. -1.8

W.Wt. +32

Y.Wt. +46

Milk +17

Frame: 3.5 (est)

Mature Wt.: N/A

Price: \$22/straw; \$35/certificate

Our Genetic Predictions

Calving Ease: *****

Udder: *****

Fleshing Ability: *****

Disposition: ****

Woodstone J Eric 8715
PCC Pay Day 1065A
PCC Dixie Erica Y1040

PCC D-J Daily Double 2748D

Emblazon CAR 103
CAR Emblazon Maid 312
Dixie Erica CH CAR 109

Woodstone Eric 8063
Woodstone Lady Jane 3275
PCC OH Pledge 2357P
PCC Dixie Erica T7040
OCC Emblazon 854E
Emulous Eulima CAR 4C
OCC Emblazon 854E
Emulous Eborea CAR E02C

Daily Double is our WOW-Factor bull! His sons and daughters are outstanding! He is a Pay Day son that is double-bred Emblazon on the bottom side of his pedigree. Pay Day's sire is an old Irish-bred bull. His dam is a Pledge daughter that is still working at 12 years of age. Daily Double has an outstanding Igenity score for tenderness. His calving ease direct EPD is in the top 2% of the Angus breed. His maintenance energy (\$EN) EPD is in the top 1% of the breed. Daily Double has sired some of the very best bulls to go through the PCC program. He is co-owned with D Bar J Cattle in Missouri.

BLACK ANGUS



Sire of Hobnob

Hobnob

Birth Date: 5/28/20

Reg. # : 20048121

EPDs: B.Wt. -2.2

W.Wt. +43

Y.Wt. +68

Milk +18

Frame: 4.0 (est)

Mature Wt.: N/A

Price: \$16/straw; \$35/certificate

Our Genetic Predictions

Calving Ease: *****

Udder: *****

Fleshing Ability: *****

Disposition: *****

PCC Hobnob 1173H

PCC Pay Day 1065A
PCC D-J Daily Double 2748D
CAR Emblazon Maid 312

PCC FSR Everclear 1913C
PCC Kimberly E7101
FSR Kimberly B4081

Woodstone J Eric 8715
PCC Dixie Erica Y1040
Emblazon CAR 103
Dixie Erica CH CAR 109

PCC FSR Jake 1950Y
FSR Elkin 948
PCC FSR Rebel Yell 1959Z
CH Kimberly 6105

Hobnob is one of five outstanding Daily Double sons working in PCC herds. He goes back to Jake and Rebel on the bottom side of his pedigree. Hobnob was a favorite in our 2021 Montana Sale. He is an extremely thick bull with tremendous masculinity, muscling and grass efficiency. His birth weight EPD is in the top 2% of the Angus breed. His \$EN EPD is also in the top 2% of the Angus breed. Hobnob is co-owned with Luis Valles, who is the PCC representative in Mexico.



José Cuervo

Birth Date: 5/15/21

Reg. # : 20274699

EPDs: B.Wt. -2.4

W.Wt. +38

Y.Wt. +61

Milk +22

Frame: 4.0 (est)

Mature Wt.: N/A

Price: \$18/straw; \$35/certificate

Our Genetic Predictions

Calving Ease: *****

Udder: *****

Fleshing Ability: *****

Disposition: *****



Semen is available for export for \$24 (US) per straw.

NEW

PCC José Cuervo 1163J

PCC Pay Day 1065A
PCC D-J Daily Double 2748D
CAR Emblazon Maid 312

PCC EZ Come EZ Go 1060C
PCC Modest Rose F8073
PCC Modest Rose A3060

Woodstone J Eric 8715
PCC Dixie Erica Y1040
Emblazon CAR 103
Dixie Erica CH CAR 109

PCC D-J Easy Money 2739Z
PCC Miss Pine Bank Z2053
PCC Iron Man 049
PCC Modest Rose Y1045

It is too early to know for sure, but we think this bull may prove to be the BEST of the Daily Double sons. We have never seen another bull as masculine or as impressive at 18 months of age. He is out of a great EZ Come EZ Go daughter. Jose's birth weight EPD is in the top 3% of the Angus breed. His \$EN is also in the top 3% of the breed. José Cuervo is co-owned with Glen Wilkinson in Texas and Lost Creek Cattle Company in North Dakota.

BLACK ANGUS

Hickory

Birth Date: 5/27/20

Reg. # : 20048119

EPDs: B.Wt. -1.8 W.Wt. +35 Y.Wt. +55 Milk +18

Frame: 4.0 (est) **Mature Wt.:** N/A **Price:** \$16/straw; \$35/certificate

Our Genetic Predictions

Calving Ease: *****

Udder: *****

Fleshing Ability: *****

Disposition: ****



PCC Hickory 1171H

PCC Pay Day 1065A
PCC D-J Daily Double 2748D
CAR Emblazon Maid 312

PCC FSR Everclear 1913C
PCC Matrix Erica E7116
FSR Matrix Erica B4109

Woodstone J Eric 8715
PCC Dixie Erica Y1040
Emblazon CAR 103
Dixie Erica CH CAR 109

PCC FSR Jake 1950Y
FSR Elkin 948
PCC FSR Back in Black 1999Z
FSR Matrix Erica 817

Hickory is another outstanding son of the great Daily Double bull. His dam goes back to Jake, Rebel and Ruger. He was the high-selling bull in our 2021 Montana Bull Sale. Hickory is a heavy-muscled bull with tremendous thickness. His birth weight EPD is in the top 1% of the Angus breed. His \$EN value is also in the top 1% of the breed. Hickory is co-owned with Furracabad Station in Australia. **Limited semen inventory.**



Commissioner

Birth Date: 3/10/15

Reg. # : 18258662

EPDs: B.Wt. -3.9 W.Wt. +23 Y.Wt. +40 Milk +27

Frame: 3.0 **Mature Wt.:** N/A **Price:** \$16/straw; \$35/certificate

Our Genetic Predictions

Calving Ease: *****

Udder: *****

Fleshing Ability: *****

Disposition: ****



Semen is available for export for \$22 (US) per straw.

PCC D-J Commissioner 2715C

OCC Moderator 825M
PCC D-J X-citement 2764X
CM Merle 918E

PCC OH Pledge 2357P
D-J BAX Audrey 123Y
BAX Elizabeth Audrey 519-26

OCC Headliner 661H
OCC Dixie Erica 845K
DHD Traveler 6807
Merle DHD 4844

OCC Homer 650H
CM Merle 863L
BAX Elite 16-4182
BAX Audrey Erica 26-9

Commissioner has been extremely popular in the United States, Canada and Australia. He is an extremely thick bull with tremendous masculinity. His birth weight and calving ease direct EPDs are both in the top 1% of the Angus breed. Commissioner's maintenance energy (\$EN) EPD is in the top 3% of the breed. His calving ease maternal (CEM) EPD is in the top 5% of the Angus breed. Commissioner is co-owned with the McDaniel Ranch in Montana and D Bar J Cattle in Missouri.

BLACK ANGUS



Ruger

Birth Date: 5/12/07

Reg. # : 16101291

EPDs: B.Wt. -1.1

W.Wt. +35

Y.Wt. +50

Milk +23

Frame: 3.5

Mature Wt.: N/A

Price: \$12/straw; \$35/certificate

Our Genetic Predictions

Calving Ease: ****

Udder: *****

Fleshing Ability: *****

Disposition: *****

OCC Anchor 771A
OCC Emancipate 889E
Dixie Erica of RR 4309

PCC Ruger 1042T

PCC Iron Man 049
PCC Queen 409
PCC Modest Queen 248

DHD Traveler 6807
OCC Juanada 709V
Shoshone Vantage JB23
Dixie Erica of RR 6124

DHLL Night Man
OCC Revolution Rose 802F
Moderator PC 4034
OCC Queen 868E

Ruger is a well-proven Emancipate son. His dam is a favorite Iron Man daughter that only weighed 1000 pounds. Ruger has left his mark in the PCC program. He is the sire of Real McCoy. He is a very thick bull that performed very well in our unique all-grass forage test. His birth weight EPD is in the top 10% of the Angus breed. He is a very low-maintenance bull with an energy value in the top 2% of the breed.. He is co-owned with the Flying S Ranch in Kansas. **Limited semen inventory.**

BLACK ANGUS



Real McCoy

Birth Date: 2/16/10

Reg. # : 16742733

EPDs: B.Wt. -4.5

W.Wt. +39

Y.Wt. +58

Milk +23

Frame: 3.5 (est)

Mature Wt.: N/A

Price: \$20/straw; \$35/certificate

Our Genetic Predictions

Calving Ease: *****

Udder: *****

Fleshing Ability: *****

Disposition: *****

OCC Emancipate 889
PCC Ruger 1042T
PCC Queen 409

PCC FSR Real McCoy 1918X

PCC MH Rebel 2009R
FSR Miss Rebel 826
FSR Miss Husker Legend 660

OCC Anchor 771A
Dixie Erica of R R 4309
PCC Iron Man 049
PCC Modest Queen 248

OCC Homer 650H
MH Beauty 148
PAR Dakota Legend 4526
GPA Queen B289

Real McCoy is the real deal! He is a Ruger son out of a Rebel daughter. Real McCoy is an extremely thick, heavy-muscled bull that has produced many, many outstanding, fault-free sons and daughters. We lead off many of our bull sales with a set of Real McCoy sons. His birth weight and calving ease direct EPDs are both in the top 1/2 of 1% of the Angus breed. His maintenance energy EPD is also in the top 1%. Real McCoy is co-owned with the Flying S Ranch in Kansas.

BLACK ANGUS



Sire of Razors Edge

Razors Edge

Birth Date: 3/15/21

Reg. # : 20088534

EPDs: B.Wt. -1.5

W.Wt. +43

Y.Wt. +67

Milk +24

Frame: 4.0 (est)

Mature Wt.: N/A

Price: \$12/straw; \$35certificate

Our Genetic Predictions

Calving Ease: ****

Udder: *****

Fleshing Ability: *****

Disposition: *****



PCC FSR Razors Edge 1830J

PCC Ruger 1042T
PCC FSR Real McCoy 1918X
FSR Miss Rebel 826

PCC Ruger 1042T
FSR Jilt D634
TQ Jilt 02Z

OCC Emancipate 889E
PCC Queen 409
PCC MH Rebel 2009R
FSR Miss Husker Legend 660

OCC Emancipate 889E
PCC Queen 409
PAR Dakota Homer 95
TQ Jilt 34P

Razors Edge is a Real McCoy son that is double-bred to Ruger. He is the result of a brother/sister mating — linebred for maternal greatness! He was the leadoff bull in our 2022 Colorado Spring Sale. Razors Edge has extreme muscling and thickness. His calving ease direct EPD is in the top 4% of the Angus breed. His SEN value is in the top 4% of the breed. Razors Edge is co-owned with Flying S Ranch in Kansas and Storm Casper of Colorado.



High Country

Birth Date: 3/13/17

Reg. # : 18909728

EPDs: B.Wt. -3.2

W.Wt. +22

Y.Wt. +42

Milk +20

Frame: 4.0 (est)

Mature Wt.: N/A

Price: \$20/straw; \$35certificate

Our Genetic Predictions

Calving Ease: *****

Udder: *****

Fleshing Ability: *****

Disposition: *****



PCC FSR High Country 2071E

PCC FSR Real McCoy 1918X
PCC FSR High Stakes 1803C
FSR Blackbird 0128

OCC Homer 650H
MH Dixie Erica 687
MH Dixie Erica 415

PCC Ruger 1042T
FSR Miss Rebel 826
PCC MH Rebel 2009R
FSR Miss Blazing Star 650

OCC Focus 813F
OCC Dixie Erica 816B
OCC Anchor 771A
Dixie Erica of C H 8041



High Country is a Real McCoy grandson. He is one of the thickest and easiest fleshing bulls to come through our program. He has been working on a high-elevation cooperative herd in western Colorado. He has a PAP score of 41. High Country's birth weight and calving ease direct EPDs are both in the top 2% of the Angus breed. His SEN value is also in the top 2% of the breed. High Country is co-owned with Flying S Ranch in Kansas and Pulliam Angus Ranch in Colorado. **Limited semen inventory.**

BLACK ANGUS



Pictured at three years of age

Alamo

Birth Date: 5/16/06

Reg. # : 15611939

EPDs: **B.Wt.** -1.2 **W.Wt.** +19 **Y.Wt.** +29 **Milk** +19

Frame: 3.5 **Mature Wt.:** N/A **Price:** \$10/straw; \$35/certificate

Our Genetic Predictions

Calving Ease: *****

Udder: *****

Fleshing Ability: *****

Disposition: ****

PCC Alamo 1125S

OCC Anchor 771A
OCC Emancipate 889E
Dixie Erica of R R 4309

Bear of Wye Umf 6591
OCC Juanada 722F
OCC Juanada 728D

DHD Traveler 6807
OCC Juanada 709V
Shoshone Vantage JB23
Dixie Erica of R R 6124
Lambdin of Wye Umf 6278
Blackbird of Wye Umf 6324
OCC Bullion 822B
OCC Juanada 801B

This is an Emancipate son that doesn't seem to have any holes. His sons and daughters perform very well in the PCC program. Alamo is the result of flushing a favorite Bear of Wye daughter to Emancipate. His dam produced until she was 10 years old, when she was found dead late in the summer (lightning). Alamo's birth weight EPD is in the top 10% of the Angus breed. His \$EN value is in the top 1% of the breed. Co-owned with 4-P Farms in Colorado.



Jester

Birth Date: 5/10/17

Reg. # : 19026311

EPDs: **B.Wt.** -0.8 **W.Wt.** +36 **Y.Wt.** +62 **Milk** +19

Frame: 4.0 (est) **Mature Wt.:** N/A **Price:** \$10/straw; \$35/certificate

Our Genetic Predictions

Calving Ease: ****

Udder: *****

Fleshing Ability: *****

Disposition: *****

PCC BA Jester 2354E

PCC FSR Real McCoy 1918X
PCC FSR Total Package 1925A
JAD Barbara S08

PCC ICE Rebel Stout 2952X
BA Katy 426
KR Bando 602P-70-57

PCC Ruger 1042T
FSR Miss Rebel 826
JAD Matrix M604
JAD Miss Barbara 5652
PCC MH Rebel 2009R
BAA Barbara 5225A
FCC Pacesetter 602P
KR Bando 645L 57 115

Jester is a Real McCoy grandson that goes back to Rebel on both sides of his pedigree. He was one of our favorite bulls in the 2018 Nebraska Bull Sale. We really like what we are seeing in his first four calf crops. Jester's birth weight EPD is in the top 15% of the Angus breed. His maintenance energy EPD is in the top 4% of the Angus breed. Jester is co-owned with 1883 Ranch and Bruns Angus, both in Nebraska.

BLACK ANGUS



Riptide

Birth Date: 3/21/16

Reg. # : 18660308

EPDs: B.Wt. -3.5

W.Wt. +12

Y.Wt. +43

Milk +26

Frame: 3.0

Mature Wt.: 1850

Price: \$12/straw; \$35/certificate

Our Genetic Predictions

Calving Ease: *****

Udder: ****

Fleshing Ability: *****

Disposition: ****



High Elevation

PCC FSR Real McCoy 1918X
PCC FSR Skywalker 1997A
FSR Miss Rebel 754
PCC FSR Riptide 3598D
PCC Colorado Hunter 1062P
MH Clova Pride 20
MH Clova Pride 105

PCC Ruger 1042T
FSR Miss Rebel 826
PCC MH Rebel 2009R
4-P Rolla R522
Moderator PC 4034
PCC Dixie Erica 0122
Octoraro Rito 503
Black Tooth Clova 215Y

Riptide is another Real McCoy grandson that has been working in a high-elevation PCC cowherd in Colorado. He has a PAP score of 37. Riptide sires calves with tremendous thickness, muscling and fleshing ability. His sons have averaged 38 on their PAP tests. Riptide's birth weight EPD is in the top 1% of the Angus breed. His \$EN EPD is in the top 4% of the breed. Riptide is co-owned with Pulliam Angus Ranch in Colorado and Flying S Ranch in Kansas.

BLACK ANGUS



Little Mo

Birth Date: 5/21/17

Reg. # : 19118560

EPDs: B.Wt. -3.1 W.Wt. +29 Y.Wt. +37 Milk +20

Frame: 4.0 (est) **Mature Wt.:** N/A **Price:** \$16/straw; \$35/certificate

Our Genetic Predictions

Calving Ease: *****

Udder: *****

Fleshing Ability: *****

Disposition: *****

PCC LCC Little Mo 3301E

PCC Del Rio 1031R
PCC OAO Amarillo 1237Z
OAO Jean 8403

MH Sari 423
OCC Emblazon 854E
MH Miss Rainmaker 3131

MH Magua 27
PCC Revolution Rose 002
DDA Antidote 100F
PAR'S Weighty Homer 84
DHD Traveler 6807
Dixie Erica of CH 1019
GDAR Rainmaker 340
IOU Miss Maverick 718

Little Mo is a 20-Star bull. He is an Amarillo son out of a 13-year-old Emblazon daughter. There is tremendous longevity in this bull's pedigree. Little Mo was the number one bull in our 2018 Colorado Fall Bull Sale for early maturity and grass efficiency. His birth weight EPD is in the top 2% of the Angus breed. His maintenance energy EPD is in the top 3% of the breed. He is co-owned with Lost Creek Cattle Company and Billy Scott, both in North Dakota. **Limited semen inventory.**

BLACK ANGUS



Ranger

Birth Date: 4/28/13

Reg. # : 17788613

EPDs: B.Wt. -0.1

W.Wt. +34

Y.Wt. +53

Milk +19

Frame: 3.5 (est)

Mature Wt.: N/A

Price: \$10/straw; \$35/certificate

Our Genetic Predictions

Calving Ease: ****

Udder: *****

Fleshing Ability: *****

Disposition: ****



High Elevation

OCC Emblazon 854E
PCC OAO Open Range 1241Y
DDA Sandy 404

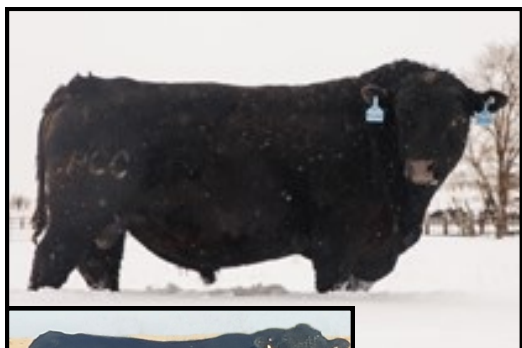
PCC PL Ranger 2450A

MH Magua 27
Tuned Magua PL Y11
Treffer Tune 6151

DHD Traveler 6807
Dixie Erica of CH 1019
Banjo of Wye UMF 6413
Miss Diamond Jumbo 587

OCC Homer 650H
MH Roda Lass 033
Treffer Validate 0329
TAR Dona Tune 0067

Ranger's sire is an Emblazon son out of the Sandy 404 cow that produced until she was 16 years old. Ranger goes back to the great Magua bull on the bottom side of his pedigree. He worked very well on a high-elevation ranch for seven years. Ranger has a DNA score for calving ease of 9 out of 10. Use him on virgin heifers with confidence. His \$EN EPD is in the top 2% of the Angus breed. Co-owned with Pulliam Angus Ranch in Colorado and Landrigan Livestock in Nebraska.



Yellowstone

Birth Date: 5/11/19

Reg. # : 19612319

EPDs: B.Wt. -1.1

W.Wt. +28

Y.Wt. +46

Milk +17

Frame: 4.0 (est)

Mature Wt.: N/A

Price: \$14/straw; \$35/certificate

Our Genetic Predictions

Calving Ease: *****

Udder: *****

Fleshing Ability: *****

Disposition: ****



Sire of Yellowstone

Beral of Wye UMF 9288
PCC Tom Cat 1064C
PCC Bench Lass X0063

PCC 4-P Yellowstone 1409G

PCC TQ Bonaparte N06W
TQ Onie 53A
TQ Onie 88X

Alap of Wye UMF 8329
Blackbird of Wye UMF 7620
MH Magua 27
PCC Bench Lass T7038

Beral of Wye UMF 9288
TQ Elizabeth 6N
PCC TQ Thick Line N56U
TQ Onie 93U

Yellowstone is a Tom Cat son that goes back to Beral of Wye on both sides of his pedigree. He had more guts and volume than any bull we had ever seen at 18 months of age. Yellowstone is a very early-maturing bull with 5-star grass efficiency. His birth weight EPD is in the top 10% of the Angus breed. His maintenance energy EPD is in the top 2% of the breed. Yellowstone is co-owned with Lost Creek Cattle in North Dakota and 4-P Farms in Colorado.

BLACK ANGUS

Pictured at 20 months of age



GameChanger

Birth Date: 4/13/19

Reg. # : 19834607

EPDs: B.Wt. -0.8

W.Wt. +20

Y.Wt. +30

Milk +19

Frame: 3.0

Mature Wt.: N/A

Price: \$12/straw; \$35/certificate

Our Genetic Predictions

Calving Ease: ****

Udder: *****

Fleshing Ability: *****

Disposition: *****

GameChanger of Hague 918

DDA Pinebank 50H
Old Fahrens Blaze 723C
Ole Pridemere 385Y

Resurgam Ngahere U407
Lady Ida of Hague 1624
HAR Lady Ida Y070 1204

Pinebank Waigroup 41/97
Melisa 206 DDA
Sinclair Everlast 6R107
Old Pridemere 31U

Pinebank Waigroup 41/97
Resurgam Souvenir S253
Dunlouise Excalibur Y070
Lady Ida Manning Volga 9708

We added GameChanger and Gambino to our program to bring in some unique genetics from the Pinebank Angus program in New Zealand. This program has adhered to philosophies very similar to ours for over 50 years. GameChanger goes back to the great Pinebank Waigroup 41/97 bull on both sides of his pedigree. He is an extremely thick, easy-fleshing bull — with a 5++ disposition. His birth weight EPD is in the top 15% of the Angus breed. His \$EN EPD is in the top 2%. GameChanger is co-owned with Hague Angus Ranch.

Pictured at 20 months of age



Gambino

Birth Date: 4/10/19

Reg. # : 19834620

EPDs: B.Wt. -0.6

W.Wt. +27

Y.Wt. +38

Milk +18

Frame: 4.0 (est)

Mature Wt.: N/A

Price: \$10/straw; \$35/certificate

Our Genetic Predictions

Calving Ease: ****

Udder: *****

Fleshing Ability: ****

Disposition: *****

Gambino of Hague 933

Pinebank Waigroup 45/02
Pinebank Waigroup 152/04
Pinebank Waigroup 86/96

Dunlouise Jipsey Earl E161
Stella of Hague 1403
DDA Stella 443

Pinebank Waigroup 3/00
Pinebank Waigroup 75/99
Shalom 486/93
Pinebank Waig 61/93

Betro of Classlochic
Dunlouise Jipsey Clova C095
DDA Ally 69C
DDA Stella 216

Gambino is the best son of Pinebank Waigroup 152/04 we have ever seen. His dam is a Jipsey Earl daughter. Jipsey Earl is a 100% old Scottish-bred bull that is also the sire of our Mojo bull. We think this bull will match very well with our existing Angus genetics. Gambino stacks extra thickness onto a very moderate frame. His birth weight EPD is in the top 15% of the Angus breed. Gambino is co-owned with Hague Angus Ranch.

LOWLINE ANGUS



Machine

Birth Date: 1/24/02

Reg. # : FM1307

Height: 45 inches

Weight: 1460

Price: \$10/straw; \$35/certificate

Our Genetic Predictions

Calving Ease: *****

Udder: *****

Fleshing Ability: *****

Disposition: *****

Fairwyn's Machine 201M

Athanlee Herman R007
Brambletye Tequila
Brambletye Agnes

Brackengrae Beau Lad P00
Bramb. Fairwyn's Natesa
Brambletye Bronwyn II M0

Mugga Majura
Trangie J325
Trangie E088
Glen Innes F403
Trangie M390 Beau Aaron
Glen Innes M343
Commodore TRA J001
Glen Innes J308

Machine is an extremely stout and powerful fullblood Lowline. Some refer to Lowline Angus as miniature Angus. We don't like that term because it gives the wrong connotation. Lowline Angus are the real deal, and we believe they have a definite place in today's beef industry. Use Machine on your 6-frame cows to produce thick, easy-fleshing, 3-frame offspring — in one generation. That saves years of time! Machine is also being used to produce predictable, high-quality grass-finished beef. He is co-owned with Dakota Lowlines in South Dakota. **Limited semen inventory.**



Bruce

Birth Date: 4/20/06

Reg. # : FM4636

Height N/A

Weight: N/A

Price: \$10/straw; \$35/certificate

Our Genetic Predictions

Calving Ease: *****

Udder: *****

Fleshing Ability: ****

Disposition: *****



Bruce's Sire

Lazy G Bruce

Kintyre Dundee KLCP003
Kintyre Robert the Bruce
Trangie K057

Murrumbong Roulette
Murrumbong Susan
Murrumbong Annabel

Trangie M214 Rouseabout
Trangie J303
Trangie H011
Trangie G166
Mugga Regent R049
Murrumbong Lucy May
Brackengrae Beau Lad BR
Trangie D060 (TRA D060)

Bruce is a fullblood Lowline bull. We don't think we have ever seen a bull of any breed with a disposition as good as this bull has. Bruce's sire (pictured) is one of the all-time winningest Lowline bulls in Australian history. Bruce's dam is a very structurally correct cow that was imported from Australia. Bruce is a well-muscled bull with excellent feet and legs. He will work great to reduce frame size in one generation, as well as in grass finishing programs. He would be an excellent choice for use on first-calf heifers. Bruce is co-owned with James Rogers in Idaho. **Limited semen inventory.**

RED ANGUS



Herd Quitter

Birth Date: 5/13/11

Reg. # : 1485432

EPDs: B.Wt. -2.8

W.Wt. +41

Y.Wt. +64

Milk +22

Frame: 3.5

Mature Wt.: 2100

Price: \$16/straw

Our Genetic Predictions

Calving Ease: ****

Udder: *****

Fleshing Ability: *****

Disposition: *****



Semen is available for export for \$22 (US) per straw.

PCC Herd Quitter 4024Y

OCC No Doubt 622N
PCC Johnny B Good 4003R
PCC Sierra 539

MH Magua 27
PCC Miss Boot Jack S6022
PCC Miss Bootjack M67

PCC Colorado Hobo
OCC Vanessa 601L
BJR C-Chief 811
Beckton Sierra ZA30 RV

OCC Homer 650H
MH Roda Lass 033
PCC Colorado Hobo
PCC Miss Bootjack 301

Herd Quitter is our favorite Johnny B Good son. This bull has a very unique pedigree! His dam is a red Magua daughter that produced until she was 14 years old — and still had a great udder! Like most Johnny B Good sons, Herd Quitter combines calving ease with outstanding thickness, muscling, masculinity and fleshing ability. His birth weight EPD is in the top 33% the Red Angus breed. Herd Quitter has an outstanding Igenity score for tenderness. He is co-owned with Landrigan Livestock in Nebraska.

RED ANGUS



Johnny B Special

Birth Date: 4/27/11

Reg. # : 1485431

EPDs: **B.Wt.** -1.7

W.Wt. +30

Y.Wt. +50

Milk +15

Frame: 3.5

Mature Wt.: N/A

Price: \$10/straw

Our Genetic Predictions

Calving Ease: ****

Udder: *****

Fleshing Ability: ****

Disposition: *****

OCC No Doubt 622N
PCC Johnny B Good 4003R
PCC Sierra 539

PCC Johnny B Special 4023Y

BAA Viking 5105A
PCC Miss Roxie W9069
PCC Miss Roxie 620

PCC Colorado Hobo
OCC Vanessa 601L
BJR C-Chief 811
Beckton Sierra ZA30 RV
OCC BAA Slugger 310A
Black Bull Blackcap N4V
Buf Crk Hobo 1961
JWJ Rock & Fire 0083 1069

Johnny B Special was the leadoff Red Angus bull in our Fall 2012 Bull Sale. He is a Johnny B Good son that has produced some outstanding replacement females. The bottom side of his pedigree goes back to some Black Angus genetics with superb longevity and udder conformation. Like his sire, this bull had outstanding ultrasound data when he came off of our unique all-grass forage test. His calving ease direct EPD is in the top 24% of the Red Angus breed. His maintenance energy EPD is in the top 1% of the breed.

RED ANGUS



Johnny Mizzou

Birth Date: 9/7/09

Reg. # : 1370667

EPDs: B.Wt. -3.6

W.Wt. +39

Y.Wt. +67

Milk +26

Frame: 4.0 (est)

Mature Wt.: N/A

Price: \$14/straw

Our Genetic Predictions

Calving Ease: ****

Udder: *****

Fleshing Ability: *****

Disposition: *****



Semen is available for export for \$20 (US) per straw.

— Not Available in Canada —

PCC LLL Johnny Mizzou 5916W

OCC No Doubt 622N
PCC Johnny B Good 4003R
PCC Sierra 539
PCC Short Cut L05
LLL Shorty's Blackbird 404
LLL Blackbird 234

PCC Colorado Hobo
OCC Vanessa 601L
BJR C-Chief 811
Beckton Sierra ZA30 RV
Colorado Shorty 894F
PCC Miss Forager 839
LLL Bandicoot 005
LLL New Trends Blackbird 909

Johnny Mizzou is the most impressive Red Angus bull we have seen come through our Missouri forage test program. He rated a 5 and 5+ for everything we evaluated and scored. He is a Johnny B Good son out of a Short Cut daughter. Johnny Mizzou's maintenance energy EPD is in the top 10% of the Red Angus breed. His birth weight EPD is in the top 20%. This bull is doing great things in Red Angus programs around the world. Johnny Mizzou is co-owned with Triple L Red Angus in Missouri.

RED ANGUS



Yazzou

Birth Date: 8/1/13

Reg. # : 1670103

EPDs: **B.Wt.** -3.1

W.Wt. +36

Y.Wt. +64

Milk +28

Frame: 4.0 (est)

Mature Wt.: N/A

Price: \$10/straw

Our Genetic Predictions

Calving Ease: ****

Udder: *****

Fleshing Ability: ****

Disposition: *****



PCC Short Cut

PCC LLL Yazzou 5920A

PCC Johnny B Good 4003R
PCC LLL Johnny Mizzou 5916W
LLL Shorty's Blackbird 404

PCC Short Cut L05
LLL Lass X419
LLL Lass 419

OCC No Doubt 622N
PCC Sierra 539
PCC Short Cut L05
LLL Blackbird 234

Colorado Shorty 894F
PCC Miss Forager 839
PCC Short Cut L05
KG Lass 72

Yazzou's pedigree goes back to our great Short Cut bull three times. Short Cut naturally sired over 1000 calves in a ten year period (spring and fall calving herds). Yazzou's birth weight EPD is in the top 28% of the Red Angus breed. His maintenance energy value is in the top 7%. As expected, we are seeing great things from this bull! Yazzou is co-owned with Triple L Red Angus in Missouri.



Jazz Boy

Birth Date: 7/7/09

Reg. # : 1353982

EPDs: **B.Wt.** -1.7

W.Wt. +38

Y.Wt. +60

Milk +28

Frame: 4.0

Mature Wt.: N/A

Price: \$10/straw

Our Genetic Predictions

Calving Ease: ****

Udder: *****

Fleshing Ability: *****

Disposition: ****

PCC Colorado Hobo
PCC Colorado Jazz 4039P
Beckton Angel CB82 JL
PCC Jazz Boy 4064W

BB 5236 Bbred 6015
PCC Sierra 030
PCC Sierra 539

Buf Crk Hobo 1961
RKJ Hero 433 804
Quahada CHF 725
BKT Angel 9A40 BT

BB L902 Bbred 5236
MM 1369 Salee 1907
BJR C-Chief 811
Beckton Sierra ZA30 RV

At \$11,500, Jazz Boy was the high-selling bull in our 2010 Fall Bull Sale. His pedigree is stacked for maternal greatness! He combines Colorado Hobo and Kit's favorite Angel cow on the top side of the pedigree with Roy Beeby's 6015 bull and Johnny B Good's dam on the bottom. Jazz Boy's maintenance energy EPD is in the top 5% of the Red Angus breed. Jazz Boy is co-owned with Al DeWit in Indiana.

RED ANGUS



Sire of Cliff

PCC DC Cliff 5056C

PCC D-7 Hoodoo 4718X
PCC DC Harvey 5025A
DC 357W Amy Cohi-345

PCC Hanky Panky 4013U
DC Hope Z230
PCC DC 023X Joyce

PCC RF MASH 4516T
Beckton Minola P826 DM
PCC Colorado High 4042P
DC 3145 124

PCC Señor Bajo 4024P
Beckton Angel CB82 JL
PCC OH Fabian 4261R
DC Rejoice N22K5

Cliff

Birth Date: 4/29/15

Reg. # : 1741425

EPDs: B.Wt. -4.4

W.Wt. +45

Y.Wt. +73

Milk +30

Frame: 3.0

Mature Wt.: 1800

Price: \$14/straw

Our Genetic Predictions

Calving Ease: *****

Udder: *****

Fleshing Ability: *****

Disposition: *****

Cliff is a 20-Star bull that goes back to our favorite Angel cow on both sides of his pedigree. He is a very early-maturing bull. Cliff is being used naturally in PCC cooperative herds in Kansas and Texas. Sons and daughters are some of the best in the PCC Program. Cliff's calving ease direct EPD is in the top 7% of the Red Angus breed. His maintenance energy (ME) EPD is in the top 2%. Cliff is co-owned with Dry Creek Red Angus in Minnesota, Bar S Ranch in Kansas and R2 Ranch in Texas.



Sire of Jango

PCC DC Jango 5041J

PCC D-7 Amazon 4735A
PCC ACT Decatur 5316D
CFL 1325

Redhill 132Y Ripper 69B
OH Ms Emulous 69B 626D
OH Ms 147-437B

PCC RF MASH 4516T
DeWit Minola R25
PCC LLL Johnny Mizzou 5916W
1006 Miller Choctaw Chief

Redhill 28U Ripper 132Y
Beckton Indigo X072 N
PCC Kaycee Hobo 4004S
OH Ms Emulous CC 147

Jango

Birth Date: 5/18/21

Reg. # : 4447605

EPDs: B.Wt. -3.3

W.Wt. +45

Y.Wt. +77

Milk +34

Frame: 4.5 (est)

Mature Wt.: N/A

Price: \$16/straw

Our Genetic Predictions

Calving Ease: *****

Udder: *****

Fleshing Ability: *****

Disposition: *****



We are extremely excited about this bull. He has excellent foot and leg structure. Jango's pedigree goes back to Johnny Mizzou on the top and Kaycee Hobo on the bottom. He has a DNA score for calving ease of 8.5 out of 10. His calving ease direct EPD is in the top 20% of the breed. Jango is a very thick and easy-fleshing bull. He is co-owned with Dry Creek Red Angus in Minnesota and Bruns Red Angus of Nebraska.

RED ANGUS



Braveheart

Birth Date: 9/13/14

Reg. # : 1738360

EPDs: B.Wt. -4.9

W.Wt. +30

Y.Wt. +48

Milk +36

Frame: 4.0 (est)

Mature Wt.: N/A

Price: \$16/straw

Our Genetic Predictions

Calving Ease: *****

Udder: *****

Fleshing Ability: ****

Disposition: *****

PCC Short Cut L05
PCC REI Super Pud 5216W
REI Star

PCC WFF Braveheart 4515B

OH Thompson 4203R
WFF Ms Emulous Thom 8501U
OH Ms Emulous Mm 4553

Colorado Shorty 894F
PCC Miss Forager 839
RF 5-Star Gold 4550P
PCC Colorado Angel M01

OCC No Doubt 622N
OH Miss Harpo 957
OCC Medicine Man 602M
SixL Ms Hobo 799

Braveheart is an extremely thick, heavy-muscled Super Pud son. He has great calving ease, with a calving ease direct EPD in the top 7% of the Red Angus breed. His maintenance energy EPD is in the top 3%. Braveheart is among the best we've seen for hair coat and fly resistance. He has been used naturally with great success in PCC cooperative herds in four different states — Missouri, Kansas, Colorado and Texas. He is co-owned with Walker Cattle Company in Missouri, Bar S Ranch in Kansas and R2 Ranch in Texas.

RED ANGUS



Bullwinkle

Birth Date: 5/17/17

Reg. # : 3808206

EPDs: B.Wt. -5.5

W.Wt. +31

Y.Wt. +52

Milk +28

Frame: 3.5 (est)

Mature Wt.: N/A

Price: \$16/straw

Our Genetic Predictions

Calving Ease: *****

Udder: *****

Fleshing Ability: *****

Disposition: *****

PCC Bullwinkle 4015E

| | |
|---------------------------|-----------------------|
| PCC REI Super Pud 5216W | PCC Short Cut L05 |
| PCC WFF Braveheart 4515B | REI Star |
| WFF Ms Emulous Thom 8501U | OH Thompson 4203R |
| | OH Ms Emulous Mm 4553 |
| PCC Short Cut L05 | Colorado Shorty 894F |
| PCC Colorado Dream W9042 | PCC Miss Forager 839 |
| PCC Colorado Dream P1050 | PCC Colorado Hobo |
| | PCC Sierra 539 |

Bullwinkle is out of a 12-year-old Short Cut daughter. He is double-bred to Short Cut. He goes back to Colorado Hobo and Johnny B Good's dam on the bottom side of his pedigree. Bullwinkle is an udder improver. He combines extreme muscle and thickness with extreme calving ease. His birth weight EPD is in the top 5% of the Red Angus breed. His maintenance energy EPD is also in the top 5%. He is co-owned with Agape Cattle Company in Texas.



Hiawatha

Birth Date: 4/4/20

Reg. # : 4285161

EPDs: B.Wt. -8.1

W.Wt. +23

Y.Wt. +37

Milk +31

Frame: 4.5 (est)

Mature Wt.: N/A

Price: \$18/straw

Our Genetic Predictions

Calving Ease: *****

Udder: *****

Fleshing Ability: *****

Disposition: *****



Semen is available for export for \$24 (US) per straw.

PCC BSR Hiawatha 4930H

| | |
|---------------------------|-------------------------|
| PCC REI Super Pud 5216W | PCC Short Cut L05 |
| PCC WFF Braveheart 4515B | REI Star |
| WFF Ms Emulous Thom 8501U | OH Thompson 4203R |
| | OH Ms Emulous Mm 4553 |
| PCC LLL Weston 5912W | PCC Johnny B Good 4003R |
| BSR Ruby C522 | LLL EZ Barbara 718 |
| LRAR HV Ruby S013 | Beckton Saga F321 KJ |
| | LRAR HV Ruby H17 |

Calving ease at its Very Best! Hiawatha's birth weight EPD is in the top 1% of the Red Angus breed. His calving ease maternal EPD is in the top 2%. His maintenance energy EPD is in the top 4%. Hiawatha is another Braveheart son. He goes back to Johnny B Good on the bottom side of his pedigree. This bull is consistently producing extremely thick and heavy-muscled calves. He is being used heavily in the US and Australia. Hiawatha is co-owned with Bar S Ranch in Kansas.

RED ANGUS



Festus

Birth Date: 5/13/16

Reg. # : 3599799

EPDs: B.Wt. -3.7

W.Wt. +30

Y.Wt. +47

Milk +28

Frame: 3.5 (est)

Mature Wt.: N/A

Price: \$18/straw

Our Genetic Predictions

Calving Ease: *****

Udder: *****

Fleshing Ability: *****

Disposition: *****



Semen is available for export for \$24 (US) per straw.

PCC Short Cut L05
PCC REI Super Pud 5216W
REI Star
PCC Festus 4102D
PCC Good As Gold 4010U
PCC Angel Z2070
PCC Angel U8066

Colorado Shorty 894F
PCC Miss Forager 839
RF 5-Star Gold 4550P
PCC Colorado Angel M01
RF 5-Star Gold 4550P
PCC Somethin' Special P1061
PCC Colorado Hobo
PCC Beckton Angel CB82 JL

We like this 20-star bull more and more all the time. Festus is an extremely masculine Super Pud son. He ain't no sissy bull! His sons are always high-selling bulls. Festus goes back to our favorite Angel cow on both sides of his pedigree. His birth weight EPD is in the top 23% of the Red Angus breed. His maintenance energy is in the top 7%. Festus has perfect foot and leg structure, which is missing in most of today's Red Angus programs. He is co-owned with Luis Valles, who is the PCC representative in Mexico.



Gold Mine

Birth Date: 5/8/19

Reg. # : 4239466

EPDs: B.Wt. -5.0

W.Wt. +39

Y.Wt. +60

Milk +28

Frame: 4.5 (est)

Mature Wt.: N/A

Price: \$16/straw

Our Genetic Predictions

Calving Ease: *****

Udder: *****

Fleshing Ability: *****

Disposition: *****



Semen is available for export for \$22 (US) per straw.

PCC Short Cut L05
PCC REI Super Pud 5216W
REI Star
PCC CTM Gold Mine 5149G
PCC Gold Standard 4013T
CTM Betty 4013-823-001
CTM Lark 4429-3167-823

Colorado Shorty 894F
PCC Miss Forager 839
RF 5-Star Gold 4550P
PCC Colorado Angel M01
RF 5-Star Gold 4550P
PCC Colorado Dream P1051
PCC OH Cash Crop 4429P
RF Betty 831-6007-3167

Gold Mine is another outstanding Super Pud son. His dam is still going at 13 years of age. Gold Mine goes back to 5-Star Gold on both sides of his pedigree. He has impressive 5-star ratings for grass efficiency, masculinity, muscling and thickness. His birth weight and calving ease direct EPDs are both in the top 7% of the Red Angus breed. His calving ease maternal EPD is in the top 4% of the Red Angus breed. Gold Mine is co-owned with the McDaniel Ranch in Montana.

RED ANGUS



Hercules

Birth Date: 5/14/20

Reg. # : 4383371

EPDs: B.Wt. -3.6

W.Wt. +49

Y.Wt. +74

Milk +32

Frame: 4.0 (est)

Mature Wt.: N/A

Price: \$14/straw

Our Genetic Predictions

Calving Ease: *****

Udder: *****

Fleshing Ability: *****

Disposition: *****



PCC CTM Hercules 5100H

PCC Short Cut L05
PCC REI Super Pud 5216W
REI Star

PCC DC Meatball 5017X
CTM Lark X012-MTBL-A312
CTM Lark 2061 COHI X012

Colorado Shorty 894F
PCC Miss Forager 839
RF 5-Star Gold 4550P
PCC Colorado Angel M01

OCC Kissimmee 754K
DC Alice-77
PCC Colorado High 4042P
RF Lark 9015-1800-2193

Hercules is a Super Pud son that goes back to our favorite Angel cow on both sides of his pedigree. He is the total package — with 5-star ratings for grass efficiency, fleshing ability, masculinity, muscling, thickness and fly resistance. His calving ease direct EPD is in the top 15% of the Red Angus breed. He has a DNA calving ease score of 8 out of 10. Hercules is co-owned with the McDaniel Ranch in Montana.



Sire of Security

Security

Birth Date: 5/6/06

Reg. # : 1129823

EPDs: B.Wt. -2.4

W.Wt. +50

Y.Wt. +75

Milk +32

Frame: 3.5 (est)

Mature Wt.: N/A

Price: \$8/straw

Our Genetic Predictions

Calving Ease: ****

Udder: *****

Fleshing Ability: *****

Disposition: ****

PCC Security 4011S

Colorado Shorty 894F
PCC Short Cut L05
PCC Miss Forager 839

PCC Colorado Hobo
PCC Colorado Dream P1052
PCC Sierra 539

Buffalo Creek Chief 824-1658
Leachman Vanesa 5900
Buf Crk Hobo 1961
JWJ Forager2 75 1125

Buf Crk Hobo 1961
RKJ Hero 433 804
BJR C-Chief 811
Beckton Sierra ZA30 RV

Security was a very stout Short Cut son. Short Cut naturally sired over 1000 calves in a ten year period (spring and fall calving herds). Security is out of a Colorado Hobo daughter that was out of Johnny B Good's dam. His pedigree is stacked for maternal greatness. Security had extreme thickness, muscling and masculinity! He is being used via AI in a PCC cooperative herd in Texas. Co-owned with R2 Ranch in Texas.

RED ANGUS



Durango

Birth Date: 5/23/16

Reg. # : 3567131

EPDs: B.Wt. -4.7

W.Wt. +26

Y.Wt. +42

Milk +20

Frame: 3.5

Mature Wt.: N/A

Price: \$18/straw

Our Genetic Predictions

Calving Ease: *****

Udder: *****

Fleshing Ability: *****

Disposition: *****

PCC P-L Durango 5702D

MH Magua 27
PCC Sneaky Pete 1019X
PCC T Lass P416

REI Chunky's Remediate
Bruns T04-108
DGL Rose T04

OCC Homer 650H
MH Roda Lass 033
PCC Iron Man 049
PCC Enquistive 212

OH Colorado Chunky 210
PCC Angel 352
Beckton Nexus L016
Beckton Rose J897 HD

Durango is somewhat of an outcross to the PCC program. He goes back to Magua (Angus with red gene) on the top side of his pedigree. He goes back to Colorado Chunky and our favorite Angel cow on the bottom. Durango's calving ease direct EPD is in the top 8% of the Red Angus breed. His maintenance energy EPD is in the top 4%. Durango has outstanding ultrasound data for marbling and tenderness. He also has excellent foot and leg structure. Durango is co-owned with Landrigan Livestock in Nebraska.

RED ANGUS



Forte

Birth Date: 9/23/18

Reg. # : 4095492

EPDs: B.Wt. -4.9

W.Wt. +30

Y.Wt. +53

Milk +29

Frame: 4.0 (est)

Mature Wt.: N/A

Price: \$20/straw



Semen is available for export for \$26 (US) per straw.

Our Genetic Predictions

Calving Ease: *****

Udder: *****

Fleshing Ability: *****

Disposition: *****

PCC Kaycee Hobo 4004S
PCC OH Care Free 5501B
OH MS Emulous M178 965W

PCC D-7 Forte 4714F

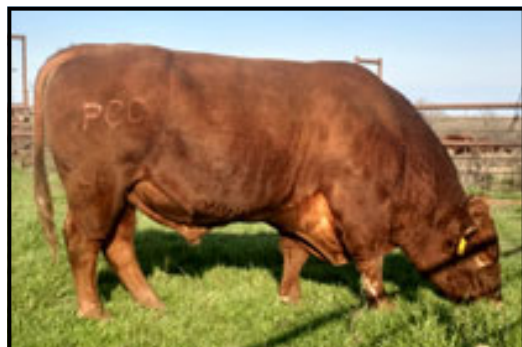
SGG F60 Red Magua
D-7 Lydia B57
D-7 Lydia Y86

Sodak Oscar 0366
PCC Red Wing 055
BTF 037 M178
Ms Emulous 666

MH Magua 27
Kit's Juliana of Shortgrass
PCC RF MASH 4516T
Beckton Lydia M121 WR

Forte was the leadoff bull in our 2020 Missouri Bull Sale. He is exactly what we have been looking for — both in the US and in Australia! Forte is a Care Free son that goes back to our great Magua bull on the bottom side of his pedigree. He is an extremely thick, heavy-muscled bull with great calving ease. His maintenance energy EPD is in the top 7% of the Red Angus breed. Forte is co-owned with Ozark Hills Genetics in Missouri and D Bar 7 Ranch in Indiana.

RED ANGUS



Parker

Birth Date: 4/26/15

Reg. # : 1741453

EPDs: **B.Wt.** -3.2

W.Wt. +50

Y.Wt. +68

Milk +28

Frame: 3.5

Mature Wt.: N/A

Price: \$14/straw

Our Genetic Predictions

Calving Ease: ****

Udder: *****

Fleshing Ability: *****

Disposition: *****

PCC Short Cut L05
PCC High Plains 4033X
PCC Colorado Angel P1055
PCC DC Parker 5055C
PCC D-7 Hoodoo 4718X
DC Hanako A320
DC Jackie Y116

Colorado Shorty 894F
PCC Miss Forager 839
PCC Colorado Hobo
Beckton Angel CB82 JL
PCC RF MASH 4516T
Beckton Minola P826 DM
PCC Johnny B Good 4003R
DC Alice-77

Parker is an impressive Short Cut grandson out of a Hoodoo daughter that goes back to Johnny B Good. His sons have been very popular in all of our bull sales. Parker's calving ease direct EPD is in the top 26% of the Red Angus breed. He has a DNA score of 9 out of 10 for tenderness. He has been one of the most heavily used Red Angus AI sires in our program. He has also been heavily used in Australia. Parker is co-owned with Agape Cattle Company in Texas and Dry Creek Red Angus in Minnesota.



Five Star Gold

Birth Date: 3/15/04

Reg. # : 1000253

EPDs: **B.Wt.** -2.5

W.Wt. +45

Y.Wt. +70

Milk +22

Frame: 4.0

Mature Wt.: N/A

Price: \$10/straw

Our Genetic Predictions

Calving Ease: *****

Udder: *****

Fleshing Ability: ****

Disposition: *****

Sams Prospector 133Z
RF Samson 9015
RF Marie 8968-473-1772
RF 5-Star Gold 4550P
BKT Viking 8968 XM
RF Marie 8968-473-1772
RL Marie 94-976-473

TLA Northern Samurai
KBJ Round Lassie 18T
BKT Viking 8968 XM
RL Marie 94-976-473
Beckton Viking 8099X
Beckton Lana 7972 NV
RL DRNG 757-726-94
RL Marie 735-269-976

5-Star Gold was a very impressive bull. He had an extremely wide stance, along with a very thick and wide butt. 5-Star Gold is tightly linebred to a very special cow (pictured). He and his sire have the same momma. This cow produced until she was 15 years old. Five-Star Gold has outstanding Igenity DNA scores for both marbling and tenderness. His Igenity DNA score for calving ease is 9 out of 10. 5-Star Gold is co-owned with the R2 Ranch in Texas and the Red Fork Ranch in Wyoming.

RED ANGUS



Gold Standard

Birth Date: 5/15/07

Reg. # : 1211263

EPDs: **B.Wt.** -3.7

W.Wt. +40

Y.Wt. +62

Milk +27

Frame: 3.5 (est)

Mature Wt.: 2000

Price: \$10/straw

Our Genetic Predictions

Calving Ease: ****

Udder: *****

Fleshing Ability: ****

Disposition: *****

RF Samson 9015
RF 5-Star Gold 4550P
RF Marie 8968-473-1772
PCC Gold Standard 4013T

PCC Colorado Hobo
PCC Colorado Dream P1051
PCC Sierra 539

Sams Prospector 133Z
RF Marie 8968-473-1772
BKT Viking 8968 XM
RL Marie 94-976-473

Buf Crk Hobo 1961
RKJ Hero 433 804
BJR C-Chief 811
BKT Sierra 7360 DT

Over the years, we have used three top-sort 5-Star Gold sons out of ET daughters of the great Colorado Hobo bull and Johnny B Good's dam. We came to the conclusion that Gold Standard was the best of the bunch! Gold Standard's pedigree is stacked for maternal greatness from top to bottom. His maintenance energy EPD is in the top 7% of the Red Angus breed. Gold Standard also has an outstanding Igenity DNA score for tenderness. Gold Standard is co-owned with the McDaniel Ranch in Montana.



Crandall

Birth Date: 9/26/15

Reg. # : 3523190

EPDs: **B.Wt.** -3.3

W.Wt. +41

Y.Wt. +70

Milk +25

Frame: 4.0 (est)

Mature Wt.: N/A

Price: \$14/straw

Our Genetic Predictions

Calving Ease: ****

Udder: *****

Fleshing Ability: ****

Disposition: *****

RF Samson 9015
RF 5-Star Gold 4550P
RF Marie 8968-473-1772
PCC ACT Crandall 5370C

PCC LLL Johnny Mizzou 5916W
CFL 1325
1006 Miller Choctaw Chief

Sams Prospector 133Z
RF Marie 8968-473-1772
BKT Viking 8968 XM
RL Marie 94-976-473

PCC Johnny B Good 4003R
LLL Shorty's Blackbird 404
0244 Miller Choctaw Chief 373
0755 Miller H3554 Chief

Crandall is a 5-Star Gold son out of a Johnny Mizzou daughter. When he was evaluated at 15 months of age, he was given very impressive 5+ ratings for muscling, masculinity and overall rating. We don't know of a bull in the Red Angus breed that has a better hair coat (the picture above was taken in January). Crandall's birth weight EPD is in the top 25% of the Red Angus breed. He is co-owned with Agape Cattle Company in Texas and Walker Cattle Company in Missouri.

HEREFORD



Domino Plato Rupert

Birth Date: 6/24/08 **Birth Weight:** N/A **Reg. # :** 42965967
EPDs: **B.Wt.** -2.0 **W.Wt.** +31 **Y.Wt.** +51 **Milk** +11
Frame: 3.5 **Mature Wt.:** 1800+ **Price:** \$16/straw; \$35/certificate

Our Genetic Predictions

| | |
|--------------------------------|---------------------------|
| Calving Ease: **** | Udder: ***** |
| Fleshing Ability: ***** | Disposition: ***** |

| | | |
|----------------------------------|--------------------|--------------------|
| | NT Plato NC 19 | NT Plato 550 NC |
| | NT Plato 19 209 | NT B Hazel B590 |
| | NT Lady Battle 806 | NT Battle INT 806 |
| | | NT Donna Rupert 5 |
| PPH Domino Plato Rupert 2 | BTCC 207 M034 | NT Plato 19 207 |
| | PPH Plato Victor 1 | NT Lady 611 5 |
| | TR Donna Plato H7 | NT Plato Domino 49 |
| | | NT Plato IZA 9424 |

Domino Plato Rupert goes back to Neil Trask (NT) breeding on both sides of his pedigree. He has been heavily used in the PCC program for many years. He is very similar to the 123 bull — but with a little more calving ease. His dam was still producing at 14 years of age. His maternal grand dam produced until she was 17. Domino Plato Rupert's birth weight EPD is in the top 2% of the Hereford breed. He is co-owned with Ozark Hills Genetics in Missouri. **Limited semen inventory.**

HEREFORD



Calvert

Birth Date: 9/30/15

Reg. # : 43739911

EPDs: B.Wt. -3.4

W.Wt. +33

Y.Wt. +49

Milk +15

Frame: 4.5 (est)

Mature Wt.: N/A

Price: \$18/straw; \$35/certificate

Our Genetic Predictions

Calving Ease: ****

Udder: ****

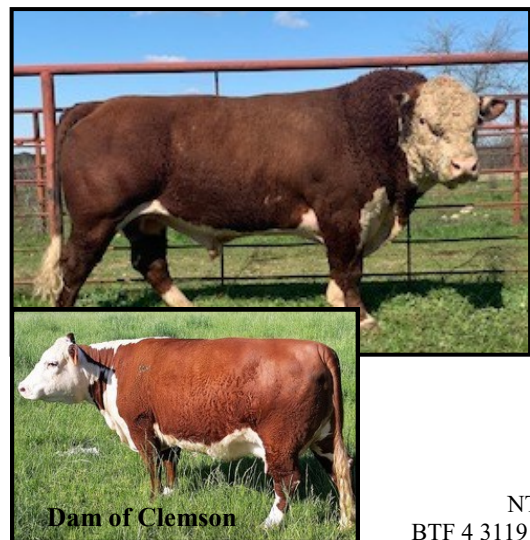
Fleshing Ability: *****

Disposition: *****

NT Plato 19 209
PPH Domino Plato Rupert 2
PPH Plato Victor 1
PCC ACT Calvert 9374C
DPH BTF 13 M180
NDPH M180 U73 Z3
DPH Grassie 4091 U73

NT Plato NC 19
NT Lady Battle 806
BTCC 207 M034
TR Donna Plato H7
NT Plato Rupert 123
NT Austina 338
BTF DPH E132 4091
OPH D31 MS F16 J909

Calvert is the best Domino Plato Rupert 2 son we have seen so far. When evaluated prior to our 2017 Texas Bull Sale, he received 5-star ratings for thickness, muscling and fleshing ability. Calvert has 4+ calving ease. His birth weight EPD is in the top 2% of the Hereford breed. It is very difficult to find this much calving ease in the Hereford breed. We are still using him naturally on our Hereford cows in Texas. **Very limited semen inventory.**



Clemson

Birth Date: 2/1/15

Reg. # : 43662827

EPDs: B.Wt. +0.4

W.Wt. +36

Y.Wt. +51

Milk +11

Frame: 4.0 (est)

Mature Wt.: N/A

Price: \$18/straw; \$35/certificate

Our Genetic Predictions

Calving Ease: ***

Udder: ****

Fleshing Ability: ****

Disposition: *****

NT Plato Rupert 4
BTF 4 3119 ET
NT Austina 338
Clemson 1129 Plato Y308 C310
BTF 252 6104
Clemson 252 6104 Y308
Edisto 167 Plato Rupert U318ET

NT Plato Rupert 0590
NT Ldy Boc Grove
NT Beau Blanch K5
NT Plato Austina BR
WPHF Victor 964 252
FHC 283 454 529
NT Plato Rupert 167
NT Trm Lady Advance J5

Clemson is a product of Clemson University's effort to preserve the Neil Trask gene pool. He is an intensely linebred bull that traces back 40+ times to NT Rupert (AHA # 9446404). Clemson's birth weight EPD is in the top 10% of the Polled Hereford breed. Clemson has produced some beautiful, problem-free daughters. Clemson is co-owned with Agape Cattle Company in Texas.

HEREFORD



Pictured at 10 years of age.

123

Birth Date: 1/22/97 **Birth Weight:** N/A **Reg. # :** 24046601
EPDs: **B.Wt.** -1.7 **W.Wt.** +33 **Y.Wt.** +53 **Milk** +4
Frame: 2.5 **Mature Wt.:** 1600+ **Price:** \$20/straw; \$35/certificate

Our Genetic Predictions

| | |
|-------------------------------|---------------------------|
| Calving Ease: **** | Udder: ***** |
| Fleshing Ability: **** | Disposition: ***** |

NT Plato Rupert 123

NT Beau Blanch K5
NT Plato Rupert 167
NT Donna Plato 61

NT Beau Blanch K5
NT WFD Queen 21
NT Woodford Queen

NT S WFD PLT 722
NT B Lass B29A
NT Rupt PLT BD7A
NT Donna Plato 2

NT S WFD PLT 722
NT B Lass B29A
Rhyneland Rupert 667
NT Victoria PLT 136

We first saw this bull when we attended the 2004 GrazeFest Convention in Alabama. 123 is a calving ease bull with tremendous thickness, foraging ability and longevity. His momma produced until she was 17. 123 is a linebred bull with the highest possible DNA score for feed efficiency. 123's birth weight EPD is in the top 3% of the Hereford breed. He is also a proven producer of high-quality, grass-finished beef. 123 is co-owned with Bent Tree Farms. **Limited semen inventory.**

HEREFORD



Axel

Birth Date: 9/7/13

Reg. # : 43509337

EPDs: B.Wt. +2.3

W.Wt. +54

Y.Wt. +81

Milk +14

Frame: 3.5

Mature Wt.: 2170

Price: \$24/straw; 35/certificate

Our Genetic Predictions

Calving Ease: **

Udder: *****

Fleshing Ability: *****

Disposition: *****



Semen is available for export for \$30 (US) per straw.

PCC OH Axel 9516A

ALH 0407 Payne 0850
ALH 0850 Payne 1111
ALH 386 Violet 0940

HPH N-15 QT Plato R-30
OH Lucy R-30 0508X
OH Vicki Lucy 704T

ALH 0246 Payne 0407
ALH 0424 Jane 0608
PW 934 Victor 386
ALH 0343 Violet 0616

HPH 6007 Carlos Plato N-15
HPH 6007 QT Sadie M-21
ALH 034 Plato Dom 0424
PPH Al's Predom Key Vick

Axel is the most impressive Hereford bull to go through the PCC program. He was purchased by a couple of seedstock producers in Canada — where he is leaving his mark. Axel has sired several top-sort bulls in the PCC program. He will add guts, volume and muscle to his offspring. He is the perfect baldy-maker. Axel is co-owned with Ozark Hills Genetics in Missouri, along with The 98 Ranch and Gemstone Cattle of Canada.

TARENDAISE



Colfax

Birth Date: 5/20/05

Reg. # : 213038

EPDs: **B.Wt.** +0.7

W.Wt. -3

Y.Wt. +6

Milk -1

Frame: 4.0

Mature Wt.: 1850+

Price: \$10/straw

Our Genetic Predictions

Calving Ease: ***

Udder: ****

Fleshing Ability: ****

Disposition: ****

| | | |
|-------------------------|-----------------------|------------------------|
| | Bluegrass Energizer | Bluegrass Black 8-Ball |
| PCC Foster H140 | | SBT B1N |
| | PCC Chanel E522 | Hatfield Desert Extra |
| PCC Colfax 7004R | | JK Chanel C125 |
| | C-C Polled Coteau 64U | Polled Coteau S210 |
| 414 | | 0216 L64 |
| | MCC Rebo B23 | MCC Junior |
| | | GHF Liz 519X |

Colfax is the most impressive Purebred Tarentaise bull to go through the PCC program. He is a small-framed, breed-color bull with tremendous muscling and masculinity. He excelled in our all-grass program. Colfax combines the very best of our Tarentaise genetics. We flushed his dam at 14 years of age. Colfax sold in our 2006 Fall Bull Sale — and we were thrilled to have the opportunity to buy him back in 2009. He worked in a PCC Composite cowherd until he was injured at 10 years of age. **Limited semen inventory.**

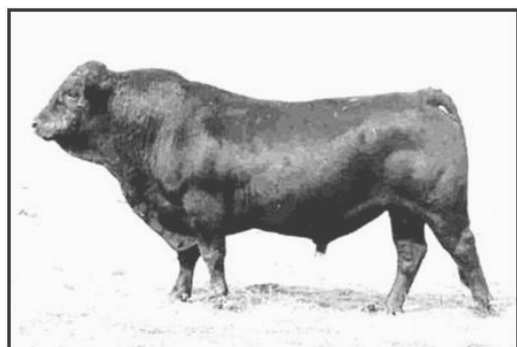
Tarentaise is a Continental breed that originated in the French Alps. They are noted for their fertility, milk production, meat-to-bone ratio and udder conformation. Compared to the British breeds, Tarentaise have a higher growth rate, higher milk production and produce a leaner carcass. Compared to most of the other Continental breeds, they excel in calving ease and fertility, while having a smaller mature size. Tarentaise is the most moderate-sized exotic breed that we know of. We no longer produce any purebred Tarentaise. However, they continue to provide the foundation for most of our composite cattle.

Our **Composite** cattle were designed to provide the right genetic combination to fit our environment, as well as our production goals. They are 25 to 50 percent Tarentaise, 25 to 75 percent Red or Black Angus, and 0 to 25 percent Hereford. They can be red or black in color. Our Composite cows have the ability to wean our heaviest calves while holding their condition and rebreeding.

Why Composites? Crossbred cattle have always been much more efficient than straightbred cattle, but most crossbreeding systems are complicated and frustrating. They require too many breeding pastures, too many different breeds of bulls and too much time and management. Traditional crossbreeding also produces a lack of uniformity in calf size, cow size, muscling and milk production since several different breeds of bulls are used.

Composite bulls provide you with all the advantages of breed complementarity and hybrid vigor without all the problems associated with the typical crossbreeding system. Instead of using several different breeds of bulls you can use composite bulls to achieve the same results. You would not have to individually identify and sort cows into different breeding pastures to be bred by different breeds of bulls. In fact, you could run all of your cows in one herd with one set of composite bulls. This makes a rotational grazing system possible.

TARENDAISE



Energizer

Birth Date: 12/14/95 **Birth Weight:** 86 **Reg. # :** 193257
EPDs: **B.Wt.** +4.1 **W.Wt.** +18 **Y.Wt.** +25 **Milk** -2
Frame: 4.5 **Mature Wt.:** 1800 **Price:** \$8/straw

Our Genetic Predictions

| | |
|-------------------------------|---------------------------|
| Calving Ease: ** | Udder: ***** |
| Fleshing Ability: **** | Disposition: ***** |

| | | |
|----------------------------|--------------------------|--------------------|
| Bluegrass Energizer | Y27 | FBS W424 |
| | Bluegrass Black 8-Ball | T13 |
| | WL Miss P61 5511 | Mr ISBA 61P |
| | | 097 Miss Bobby 632 |
| SBT B1N | MHWF The Intimidator 988 | Ignace |
| | | Bar Four Sheba |
| | WKR Nasturtium 1N | IF |
| | | WKR Miss 96H R3328 |

Energizer is a powerhouse of a Tarentaise bull. He is black, polled and purebred. Energizer packs a tremendous amount of thickness, muscling and fleshing ability in a relatively small frame. He is also extremely masculine in appearance. He ain't noissy bull. Great foot and leg structure. Energizer crosses very well on Angus-based cows. His crossbred calves will be as good as they come. **Limited Semen Inventory.**

Black Bonus



Birth Date: 4/27/99 **Reg. # :** 211312
EPDs: **B.Wt.** +2.3 **W.Wt.** +12 **Y.Wt.** +17 **Milk** +0
Frame: 4.0 **Mature Wt.:** 1900 **Price:** \$8/straw

Our Genetic Predictions

| | |
|--------------------------------|---------------------------|
| Calving Ease: *** | Udder: ***** |
| Fleshing Ability: ***** | Disposition: ***** |

| | | |
|----------------------------|------------------------|------------------------------|
| PCC Black Bonus 999 | Bluegrass Black 8-Ball | Y27 |
| | Bluegrass Energizer | WL Miss P61 5511 |
| | SBT B1N | MHWF The Intimidator 988 |
| | | WKR Nasturtium 1N |
| 9669 | Excalibur X019 | C-C Polled Coteau 64U |
| | | N Lazy L S19 |
| | Angus Cross Dam | Angus Sire |
| | | Angus/Hereford Crossbred Dam |

Black Bonus is a registered 75% Tarentaise bull that was still working at age 13. Like his sire, Energizer, he is black and polled. Black Bonus is an extremely heavy-muscled bull with a tremendous amount of depth and spring of rib. We are using Black Bonus to produce some very functional and popular PCC Composite cattle that are 3/8 Tarentaise. He is co-owned with Toby Foland in Wyoming.

COMPOSITE



Pictured at two years of age

Colombo

Birth Date: 5/10/15

Description: Red/Polled (50% Red Angus; 50% Tarentaise)

Frame: 4.0 (est)

Mature Wt.: N/A

Price: \$8/straw

Our Genetic Predictions

Calving Ease: ****

Udder: *****

Fleshing Ability: ****

Disposition: *****

PCC Foster H140
PCC Colfax 7004R
Tarentaise Dam 414
PCC P-L Colombo 7914C
PCC P-L Cash Man 5726U
Red Angus Dam Z12
Red Angus Dam 0113

Bluegrass Energizer
PCC Chanel E522
C-C Polled Coteau 64U
MCC Rebo B23
PCC OH Cash Crop 4429P
OH Ms Emulous Mm 522R
Red Angus Sire
Red Angus Dam

Colombo was the leadoff Composite bull in our Colorado 2016 Fall Sale. He is a high-marbling bull that had 4+ ratings for thickness, masculinity and overall rating when we evaluated him prior to the sale. Colombo is a Colfax son. His dam goes back to Cash Crop (Red Angus). He is co-owned with Landrigan Livestock in Nebraska. **Limited Semen Inventory.**



Sire of Tallahassee

Tallahassee

Birth Date: 5/17/12

Description: Red/Polled (50% Red Angus; 50% Tarentaise)

Frame: 4.5 (est)

Mature Wt.: N/A

Price: \$8/straw

Our Genetic Predictions

Calving Ease: ***

Udder: *****

Fleshing Ability: *****

Disposition: *****

OCC No Doubt 622N
PCC Johnny B Good 4003R
PCC Sierra 539
PCC Tallahassee 7043Z
Bluegrass Energizer
PCC Miss Candi M53
SBT B1N

PCC Colorado Hobo
OCC Vanessa 601L
BJR C-Chief 811
Beckton Sierra ZA30 RV
Bluegrass Black 8-Ball
SBT B1N
Hatfield Desert Extra
Tarentaise Dam 9316

Tallahassee was the leadoff Composite bull in our Colorado 2013 Fall Bull Sale. He has impressive 5-star ratings for muscling, thickness, masculinity and overall. Tallahassee's dam produced in our PCC herd until she was 13 years old. She was sold because her last calf died for unknown reasons prior to weaning. We don't keep cows in the PCC program unless they wean a calf every year. Tallahassee is co-owned with the CJ Schemper Farm in Kansas.

COMPOSITE



Elijah

Birth Date: 4/12/99

Description: Black/Polled (50% Angus; 50% Tarentaise)

Frame: 3.0

Mature Wt.: 1800+

Price: \$8/straw

Our Genetic Predictions

Calving Ease: ****

Udder: ****

Fleshing Ability: ****

Disposition: ****

MCC Elijah 934

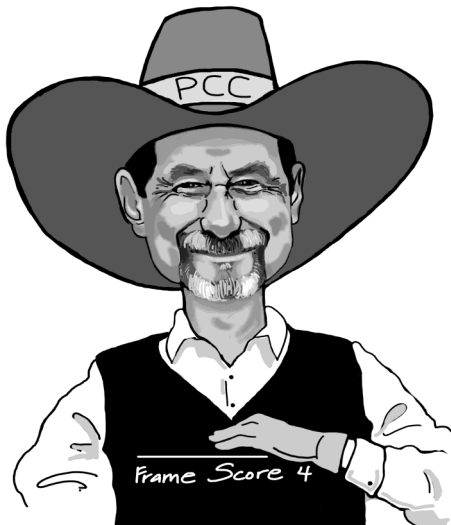
OCC Anchor 771A
OCC Emancipate 889E
Dixie Erica of RR 4309

C-C Polled Coteau 64U
Tarentaise Dam
Tarentaise Dam

DHD Traveler 6807
OCC Juanada 709V
Shoshone Vantage JB23
Dixie Erica of RR 6124

Polled Coteau S210
0216 L64
Tarentaise Sire
Tarentaise Dam

Elijah was an extremely thick, easy-fleshing, heavy-muscled bull — in a 3-frame package. He has been used on well over 500 first-calf heifers with very few problems. It is very rare to find a bull this stout that has this much calving ease. Elijah was still working in a PCC cooperative herd at 11 years of age. He is co-owned with Matney Cattle Company in Wyoming and Landrigan Livestock in Nebraska.



"A 4-frame cow is 50 inches tall. We have some thick, easy-fleshing, 4-frame cows that can easily weigh over 1200 pounds. A 4-frame bull is 54 inches tall. We have some thick, easy-fleshing 4-frame bulls that weigh well over a ton. That is big enough!"

"The only difference between a 4-frame and a 5-frame is two inches between the ground and the belly, which doesn't weigh very much and is impossible to eat."

~ Kit Pharo

HEAT TOLERANT BREEDS & COMPOSITES

For nearly a decade, we have been experimenting with several different breeds and breed combinations to come up with some excellent genetic solutions to heat stress. The one thing we want to minimize is the use of Brahman genetics. Although Brahman cattle excel in heat tolerance, they are too big and inefficient to fit our low-input program. Brahman and Brahman-cross cattle also lack fertility, which is the most important economic trait for cow-calf producers. Two more problems with Brahman-cross cattle are disposition and carcass quality.

For the most part, we are experimenting with Bos Taurus breeds of cattle that have Spanish and/or African origins. These include Mashona, Creollo, Romosinuano, Tuli, Senepol and South Poll. Although we are working with some purebred tropical cattle, we much prefer to create composite breeds that are the result of using our thick, easy-fleshing, moderate-sized Red and Black Angus cattle as the base. The resulting composite cattle have a much more acceptable and marketable appearance.

Mashona is an indigenous breed from Africa that originated with the Shona people in Zimbabwe. The breed was developed under natural selection without any external inputs for thousands of years in an extremely harsh and unforgiving environment. Mashona cattle have extremely low maintenance requirements. They are very fertile and easy fleshing. They are highly mobile grazers that have the ability to browse. They have early carcass maturity and finish well on grass. Mashona excel in hot and/or humid environments with low-quality forages. They work well on endophyte-infected fescue. They have a very high resistance to parasites and disease. Best of all, Mashona is a Bos Taurus breed.



Zim Bob

Birth Date: 6/15/15

Description: Red/Polled (100% Mashona)

Frame: 2.0

Mature Wt.: 1600

Price: \$22/straw



Semen is available for export for \$28 (US) per straw.

Our Genetic Predictions

Calving Ease: ****

Udder: *****

Fleshing Ability: ****

Disposition: *****

Many believe Zim Bob will prove to be the best Mashona bull in modern times. He is a favorite of Jaime Elizondo and Johan Zietsman. We are using Zim Bob heavily to produce some Heat-Tolerant Composite cattle — in the US and in Australia. He is also being heavily used by our PCC representative in Mexico. We recently sold 4000 units to a customer in Paraguay. There's been considerable interest from producers around the world. Zim Bob is co-owned with Luis Valles of La Lagartija Cattle Company in Mexico.

HEAT TOLERANT BREEDS & COMPOSITES

Hondo

Birth Date: 3/18/19

Description: Black/Polled (50% Mashona; 50% Red Angus)

Frame: 4.0 (est)

Mature Wt.: N/A

Price: \$10/straw

Our Genetic Predictions



Semen is available for export for \$16 (US) per straw.

Calving Ease: ****

Udder: *****

Fleshing Ability: *****

Disposition: ****

PCC Security 4011S

PCC R2R Everett 4622D

R2R Rachel 874A

PCC R2R Hondo 8000G

Multi-Sire Mashona Bull

Black Mashona 375

PCC Short Cut L05

PCC Colorado Dream P1052

RF 5-Star Gold 4550P

R2R Rachel 874R

Hondo is the result of breeding an extremely thick, easy-fleshing Red Angus bull to a black Mashona cow. Therefore, he is heterozygous black. He was the leadoff Black Composite bull in our 2020 Alabama Sale. Hondo had a very impressive 5+ rating for both hair coat and fly resistance! He is co-owned with the R2 Ranch in Texas and Furracabad Station in Australia.



Tarzan

Birth Date: 3/15/12

Description: Dark Red (Bay)/Horned (100% Mashona)

Frame: 3.5

Mature Wt.: N/A

Price: \$14/straw

Our Genetic Predictions

Calving Ease: ****

Udder: *****

Fleshing Ability: *****

Disposition: ****

Prior to Zim Bob, Tarzan was the most heavily used Mashona bull in the PCC program. We used him on some of our thick, easy-fleshing Red Angus cows. The results have been very impressive! Check out our Diamond bull on the next page. The proof is in the pudding! Tarzan has also been used by Steven Lukefahr in his heat-tolerant program in south Texas. Tarzan is co-owned with D Bar 7 Ranch in Indiana and Walker Cattle Company in Missouri. **Limited semen inventory.**

HEAT TOLERANT BREEDS & COMPOSITES



Diamond

Birth Date: 9/28/16

Description: Red/Polled (50% Mashona; 50% Red Angus)

Frame: 3.5 (est)

Mature Wt.: N/A

Price: \$20/straw

Our Genetic Predictions

Calving Ease: ****

Udder: *****

Fleshing Ability: *****

Disposition: *****

PCC WFF Diamond 7558D

Multi-Sire Mashona Sire
Tarzan (Bay Mashona)
Mashona Dam

Mashona Sire
Mashona Dam
Mashona Sire
Mashona Dam

PCC REI Super Pud 5216W
SCCC Ms Emulous Spud 4015B
WFF Ms Emulous LC 114Y

PCC Short Cut L05
REI Star
PCC OH Last Call 4233T
Red Angus Dam 8509U

Diamond is a Tarzan son out of a slick-haired Super Pud daughter. It is rare to see a bull with a better hair coat. Diamond also has 5-star fly resistance. He will work well in hot and humid environments. Because he is only 50% Mashona, he will work just as well in northern environments that have hot summertime temperatures. When evaluated, he received 5+ ratings for muscling, thickness, fleshing ability and overall rating. Diamond is co-owned with Walker Cattle Company in Missouri.

HEAT TOLERANT BREEDS & COMPOSITES

He-Man

Birth Date: 4/22/20

Description: Red/Polled (25% Mashona; 25% Romo; 50% Red Angus)

Frame: 4.5 (est)

Mature Wt.: N/A

Price: \$14/straw

Our Genetic Predictions

Calving Ease: ****

Udder: *****

Fleshing Ability: ****

Disposition: *****



PCC WCC He-Man 8626H

Tarzan M157
PCC WFF Diamond 7558D
SCCC Ms Emulous Spud 4015B

Garza Romo 650
WFF801F (Romosinuano/Red Angus Cross)
Red Angus Dam

Multi-Sire Mashona Sire
Mashona Dam
PCC REI Super Pud 5216W
WFF Ms Emulous LC 114Y

Romosinuano Sire
Romosinuano Dam
Red Angus Sire
Red Angus Dam

He-Man is a Diamond son out of a 50% Romosinuano cow. Therefore, He-Man is 25% Mashona and 25% Romosinuano. The Romosinuano breed is a tropically-adapted Bos Taurus breed that originated in the Sinú valley of northern Colombia, South America. We really like this breed combination! He-Man has 5-star muscling, thickness and masculinity — with 4+ fleshing ability. He is co-owned with Al DeWit in Indiana, Walker Cattle Company in Missouri and 5P Farms in Oklahoma.

Callado

Birth Date: 3/27/19

Description: Red/Polled (50% Mashona; 50% Red Angus)

Frame: 4.0 (est)

Mature Wt.: N/A

Price: \$12/straw

Our Genetic Predictions

Calving Ease: ****

Udder: ****

Fleshing Ability: *****

Disposition: *****

Quieto (Red Mashona)

PCC R2R Callado 8010G

PCC Little Bear 4114X
R2R Cedar 327B
TR Cedar NT327

OH Colorado Chunky 210
Beckton Angel CB82 JL
PCC DC Meatball 5017X
TR Cedar NT327

Callado is a very impressive Quieto son out of a powerful Red Angus cow that goes back to Colorado Chunky and our all-time favorite Angel cow. He was another very popular bull at our 2020 Alabama Sale. When evaluated prior to the sale, Callado received impressive 5-star ratings for fleshing ability, muscling, thickness, masculinity, hair coat and overall rating. He is co-owned with the R2 Ranch in Texas and Landrigan Livestock in Nebraska.

HEAT TOLERANT BREEDS & COMPOSITES



Generalissimo

Birth Date: 3/23/19

Description: Red/Polled (50% Romosinuano; 50% Red Angus)

Frame: 4.5 (est)

Mature Wt.: N/A

Price: \$12/straw

Our Genetic Predictions

Calving Ease: ****

Udder: *****

Fleshing Ability: *****

Disposition: ****

PCC LLL Johnny Mizzou 5916W
PCC Jaw Dropper 4007D
PCC TB Weave 5048R
PCC D-7 Generalissimo 7700G

Panchico
Romosinuano Dam E353
Romosinuano Dam

PCC Johnny B Good 4003R
LLL Shorty's Blackbird 404
MH Magua 27
PCC Enamor 372

Romosinuano Sire
Romosinuano Dam
Romosinuano Sire
Romosinuano Dam

The Romosinuano breed is a tropically-adapted Bos Taurus breed that originated in the Sinú valley of northern Colombia, South America. They appear to be the most heat tolerant of the various breeds we are working with. Generalissimo is the result of breeding a Romo cow to an extremely stout Johnny Mizzou son. He was the best of the five Romo-cross bulls we sold at our 2020 Alabama sale. Generalissimo was the only one of the five with 5-star fleshing ability. He was also the only one that combined a 5+ hair coat with 5+ fly resistance. He is co-owned with the D Bar 7 Ranch in Indiana.



Go Get 'Em

Birth Date: 3/28/19

Reg. # : 41659

Description: Red/Polled (100% South Poll)

Frame: 4.5 (est)

Mature Wt.: N/A

Price: \$20/straw

Our Genetic Predictions

Calving Ease: ****

Udder: *****

Fleshing Ability: ****

Disposition: *****



Sire of Go Get 'Em

Holiday 1123
OF Otium's Osceola
JL 869 4029 041411

PCC OH Go Get 'Em 8106G

BTF 4401 Dynamite 9401
VLCC 9401 5422 25
BTF 3422 2001 5422

BTF Bonafide 5447 9405
BTF 240 1572 4206
MT 416 Dandy 869
MT 4029

BTF 0446 M446 4401
BTF 5430 B0358
BTF 1742 1960 3422
BTF 6530 0891 TS 2001

South Poll is a relatively new composite breed. It has a locked-in breed combination of 25% Red Angus, 25% Polled Hereford, 25% Senepol and 25% Barzona. Although this breed is very heat tolerant, it will perform very well in more temperate climates. They grow hair when they need to. Go Get 'Em was the leadoff bull in our first-ever Alabama Bull Sale. He has a dog-gentle 5+ disposition. He also has 5+ grass efficiency, muscling and masculinity. He combines a 5-star hair coat with 4+ fly resistance. Go Get 'Em is co-owned with Bent Creek Farm in Virginia and Ozark Hills Genetics in Missouri.

Cowboy Logic: *“Nothing ages a man as fast as trying to prove he is as young as ever.”*

**PHARO CATTLE COMPANY
44017 COUNTY ROAD Z
CHEYENNE WELLS, CO 80810**

**PRSRT STD
US POSTAGE PAID
PERMIT NO. 28
Grand Island, NE**

Phone: 1-800-311-0995

**Email: Kit@PharoCattle.com
Tyson@PharoCattle.com**

Website: www.PharoCattle.com

ADDRESS SERVICE REQUESTED



**The Biggest and Best Selection of
Low-Maintenance, Grass-Based Genetics
In the World**